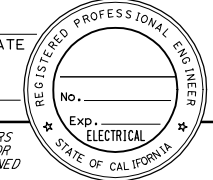


Dist	COUNTY	ROUTE	POST MILES TOTAL PROJECT	SHEET No.	TOTAL SHEETS

REGISTERED ELECTRICAL ENGINEER	DATE
PLANS APPROVAL DATE	

THE STATE OF CALIFORNIA OR ITS OFFICERS OR AGENTS SHALL NOT BE RESPONSIBLE FOR THE ACCURACY OR COMPLETENESS OF SCANNED COPIES OF THIS PLAN SHEET.



LEGEND: (THIS SHEET ONLY)

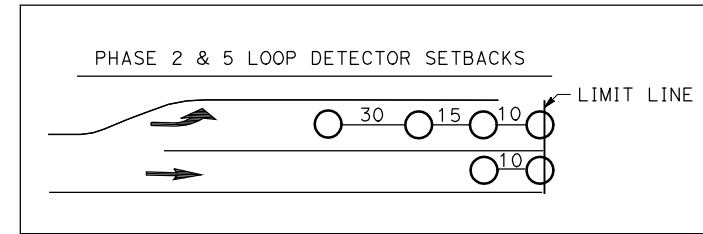
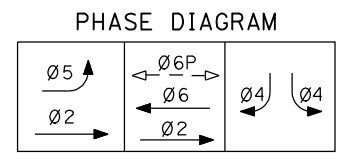
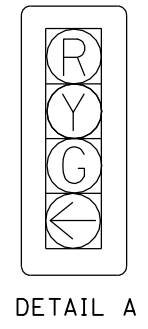
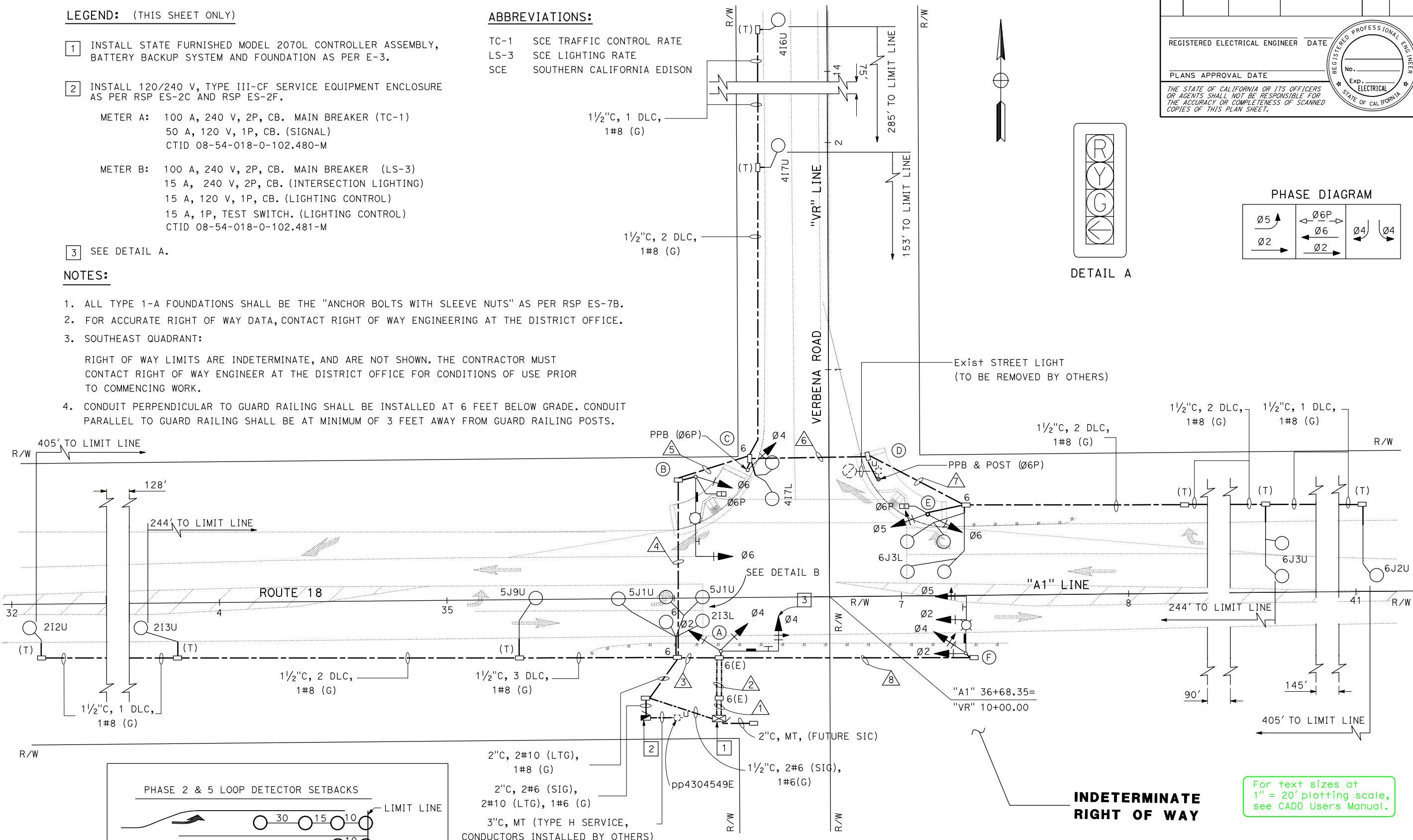
- INSTALL STATE FURNISHED MODEL 2070L CONTROLLER ASSEMBLY, BATTERY BACKUP SYSTEM AND FOUNDATION AS PER E-3.
- INSTALL 120/240 V, TYPE III-CF SERVICE EQUIPMENT ENCLOSURE AS PER RSP ES-2C AND RSP ES-2F.
 - METER A: 100 A, 240 V, 2P, CB. MAIN BREAKER (TC-1)
50 A, 120 V, 1P, CB. (SIGNAL)
CTID 08-54-018-0-102.480-M
 - METER B: 100 A, 240 V, 2P, CB. MAIN BREAKER (LS-3)
15 A, 240 V, 2P, CB. (INTERSECTION LIGHTING)
15 A, 120 V, 1P, CB. (LIGHTING CONTROL)
15 A, 1P, TEST SWITCH. (LIGHTING CONTROL)
CTID 08-54-018-0-102.481-M
- SEE DETAIL A.

ABBREVIATIONS:

- TC-1 SCE TRAFFIC CONTROL RATE
- LS-3 SCE LIGHTING RATE
- SCE SOUTHERN CALIFORNIA EDISON

NOTES:

- ALL TYPE 1-A FOUNDATIONS SHALL BE THE "ANCHOR BOLTS WITH SLEEVE NUTS" AS PER RSP ES-7B.
- FOR ACCURATE RIGHT OF WAY DATA, CONTACT RIGHT OF WAY ENGINEERING AT THE DISTRICT OFFICE.
- SOUTHEAST QUADRANT:
RIGHT OF WAY LIMITS ARE INDETERMINATE, AND ARE NOT SHOWN. THE CONTRACTOR MUST CONTACT RIGHT OF WAY ENGINEER AT THE DISTRICT OFFICE FOR CONDITIONS OF USE PRIOR TO COMMENCING WORK.
- CONDUIT PERPENDICULAR TO GUARD RAILING SHALL BE INSTALLED AT 6 FEET BELOW GRADE. CONDUIT PARALLEL TO GUARD RAILING SHALL BE AT MINIMUM OF 3 FEET AWAY FROM GUARD RAILING POSTS.



DETAIL B
NO SCALE

ELECTRICAL SYSTEMS SHEET, EXAMPLE "A"
INDETERMINATE R/W-SAME LOCATION AS LAYOUT EXAMPLE "A"

**INDETERMINATE
RIGHT OF WAY**

For text sizes at
1" = 20' plotting scale,
see CADD Users Manual.

**SIGNAL AND LIGHTING
(VERBENA ROAD)**
SCALE: 1" = 20'

E-1