

CONDUCTOR AND CONDUIT SCHEDULE

CONDUCTOR DESIGNATION	RUN NUMBER																				
	NUMBER OF CONDUCTORS																				
	1	2	3	4	5	6	7	8	9	10	11	12	13	14	15	16	17	18	19	20	21
TYPE B DLC	SURVEILLANCE			12		12	12										12	12	12		
	DEMAND			1		2	2										1	1	1		
	PASSAGE			1		2	2										1	1	1		
	COUNT	1		1		1	1										3	3	2	2	1
	QUEUE						2	2						1		1	1				
#14 LOOP WIRE					12																
#14 RAMP SIGNAL		6	6			6	6									3	3	3			
#14 SPARE		3	3			3	3									3	3	3			
#12 FLASHING BEACON							2	2	2					2	2	2	2				
#10 SIGNAL COMMON		1	1			1	1									1	1	1			
#8 RAMP SERVICE							2	2		2	4	4	2			2	2				
#8 BARE GROUNDING		1	1			1	1	1	1	1	1	1	1	1	1	1	1	1	1		1
#8 EXISTING SERVICE CONDUCTORS [RC]																					7
#8 CCTV SERVICE PART OF CCTV SYSTEM																					2
TYPE D CABLE PART OF COMMUNICATION SYSTEM																					2
CONDUIT SIZE	1 1/2"	2"	2"	3"	3"	4"	4"(2)	3"	2"	2"	2 1/2"		2 1/2"	2"	2"	2 1/2"	4"(2)	4"	4"	1 1/2"	2"
EXISTING CONDUIT SIZE																					

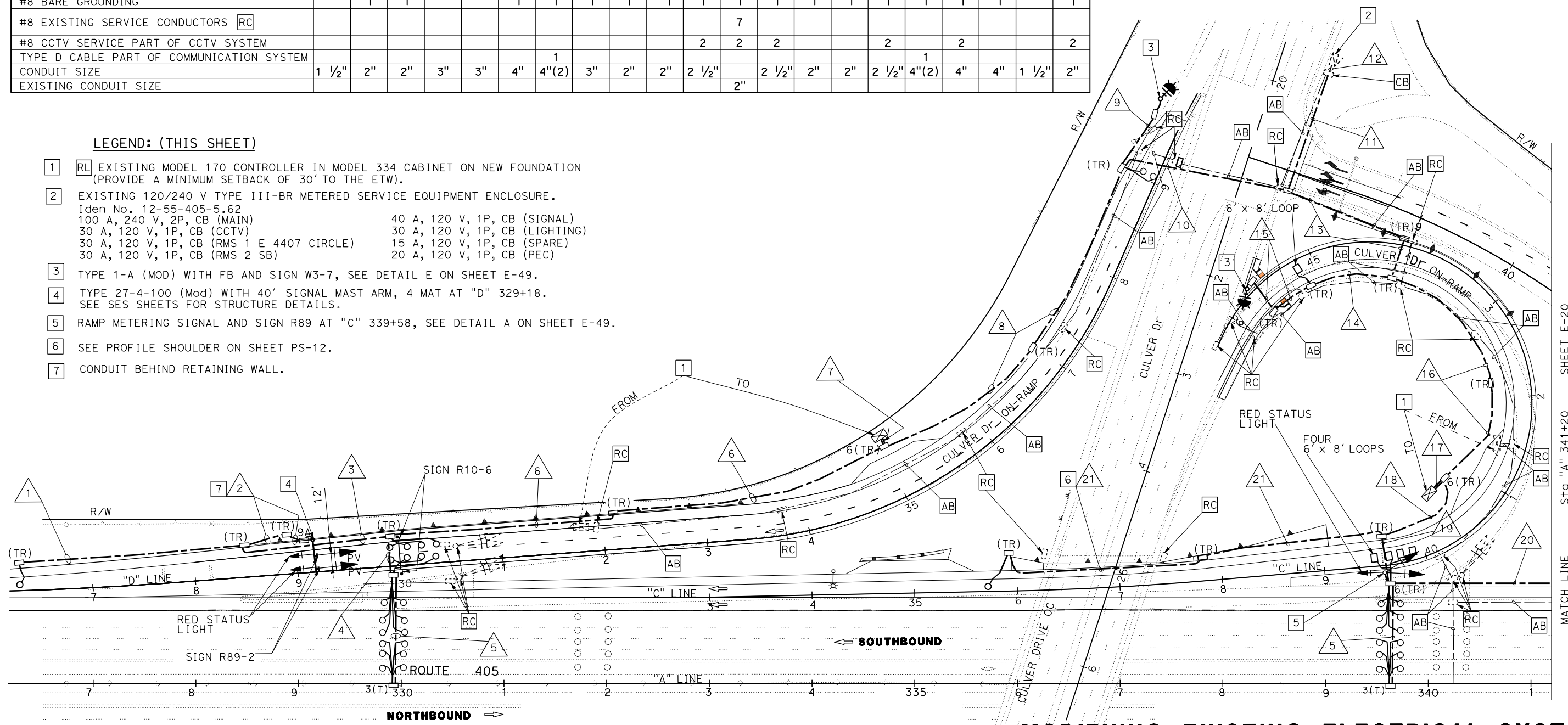
Dist	COUNTY	LOCATION CODE	POST MILES TOTAL PROJECT	SHEET No.	TOTAL SHEETS

REGISTERED ELECTRICAL ENGINEER DATE _____
 PLANS APPROVAL DATE _____
THE STATE OF CALIFORNIA OR ITS OFFICERS OR AGENTS SHALL NOT BE RESPONSIBLE FOR THE ACCURACY OR COMPLETENESS OF SCANNED COPIES OF THIS PLAN SHEET.

- NOTES: (THIS SHEET ONLY)**
- FOR ACCURATE RIGHT OF WAY DATA, CONTACT RIGHT OF WAY ENGINEERING AT THE DISTRICT OFFICE.
 - ABANDON ALL EXISTING LOOPS
 - FOR RMS DETAILS, SEE SHEET E-49.
 - SPACING FOR MAINLINE DOUBLE LOOP IS 20' LEADING EDGE TO LEADING EDGE.

LEGEND: (THIS SHEET)

- [RL]** EXISTING MODEL 170 CONTROLLER IN MODEL 334 CABINET ON NEW FOUNDATION (PROVIDE A MINIMUM SETBACK OF 30' TO THE ETW).
- EXISTING 120/240 V TYPE III-BR METERED SERVICE EQUIPMENT ENCLOSURE.
 Iden No. 12-55-405-5.62
 100 A, 240 V, 2P, CB (MAIN) 40 A, 120 V, 1P, CB (SIGNAL)
 30 A, 120 V, 1P, CB (CCTV) 30 A, 120 V, 1P, CB (LIGHTING)
 30 A, 120 V, 1P, CB (RMS 1 E 4407 CIRCLE) 15 A, 120 V, 1P, CB (SPARE)
 30 A, 120 V, 1P, CB (RMS 2 SB) 20 A, 120 V, 1P, CB (PEC)
- TYPE 1-A (MOD) WITH FB AND SIGN W3-7, SEE DETAIL E ON SHEET E-49.
- TYPE 27-4-100 (Mod) WITH 40' SIGNAL MAST ARM, 4 MAT AT "D" 329+18. SEE SES SHEETS FOR STRUCTURE DETAILS.
- RAMP METERING SIGNAL AND SIGN R89 AT "C" 339+58, SEE DETAIL A ON SHEET E-49.
- SEE PROFILE SHOULDER ON SHEET PS-12.
- CONDUIT BEHIND RETAINING WALL.



ELECTRICAL EXAMPLE K6, MODIFYING EXISTING ELECTRICAL SYSTEMS, MODIFYING RAMP METERING

MODIFYING RAMP METERING SYSTEM
 APPROVED FOR ELECTRICAL WORK ONLY

MODIFYING EXISTING ELECTRICAL SYSTEM
 SCALE: 1" = 50'
E-19

STATE OF CALIFORNIA - DEPARTMENT OF TRANSPORTATION **Caltrans** ELECTRICAL DESIGN SHEET E-20 MATCH LINE STD "A" 341+20 SHEET E-20 **EXAMPLE K6 MODIFYING EXISTING ELECTRICAL SYSTEM - RELEASED 7/21/2017**