

DIST	COUNTY	ROUTE	POST MILES TOTAL PROJECT	SHEET No.	TOTAL SHEETS

REGISTERED CIVIL ENGINEER DATE

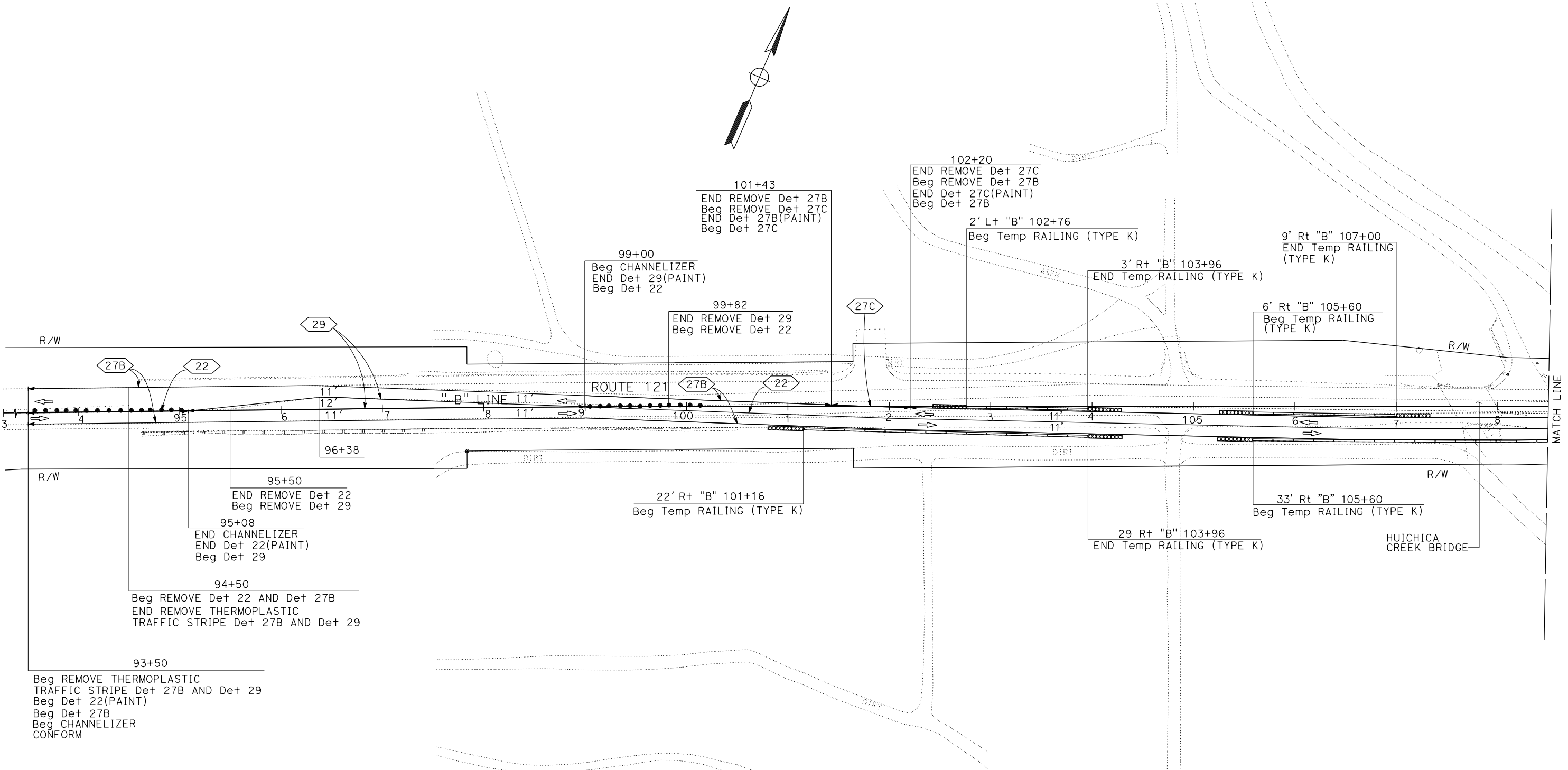
PLANS APPROVAL DATE

THE STATE OF CALIFORNIA OR ITS OFFICERS OR AGENTS SHALL NOT BE RESPONSIBLE FOR THE ACCURACY OR COMPLETENESS OF SCANNED COPIES OF THIS PLAN SHEET.



NOTE:  
FOR ACCURATE RIGHT OF WAY DATA, CONTACT  
RIGHT OF WAY ENGINEERING AT THE DISTRICT OFFICE.

STAGE 2 (WORK ON NORTH SIDE)  
TRAFFIC ON SOUTH SIDE OF ROADWAY



**PWP:**  
Identify all PWPs being used on the project.  
Identify the location of PWP devices by  
Offset and Station (excludes Mobile Barrier  
System and Impact Attenuator Vehicles).  
Begin and End for the PWP devices shall  
follow the direction of stationing.

TRAFFIC HANDLING PLANS SHEET, EXAMPLE "121 TH-3"

TRAFFIC HANDLING PLAN  
STAGE 2  
SCALE: 1" = 50'

APPROVED FOR TRAFFIC HANDLING WORK ONLY

TRAFFIC HANDLING SHEET RELEASED 11/05/2021