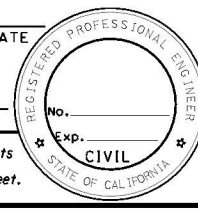
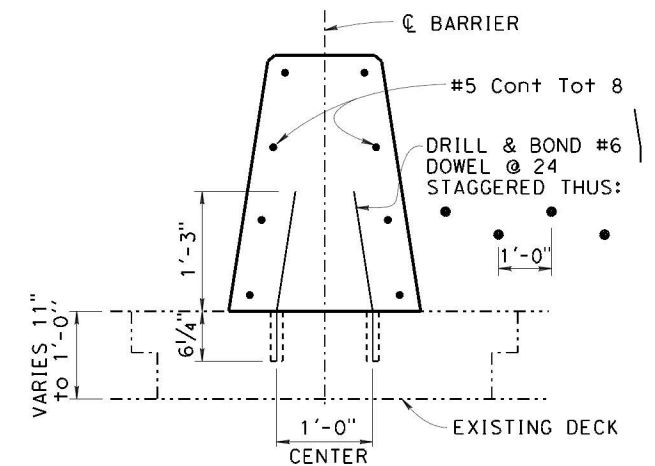
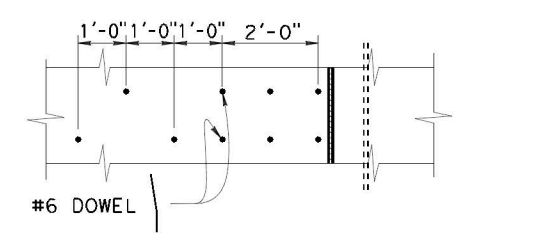


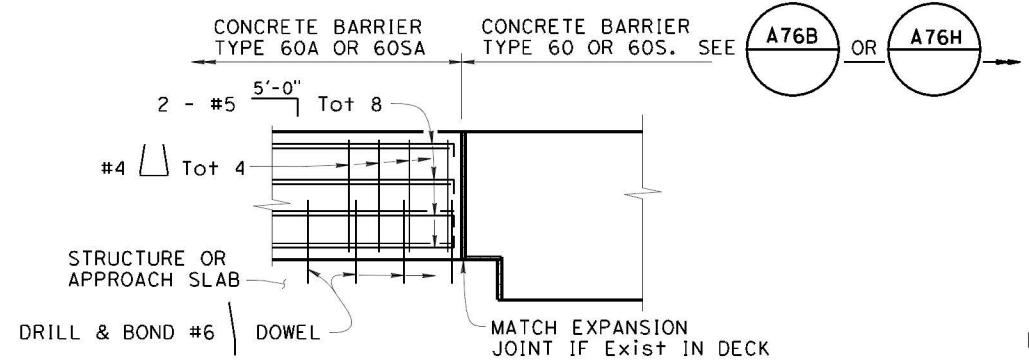
DIST	COUNTY	ROUTE	POST MILES TOTAL PROJECT	SHEET No.	TOTAL SHEETS
REGISTERED CIVIL ENGINEER			DATE		
PLANS APPROVAL DATE					
<small>The State of California or its officers or agents shall not be responsible for the accuracy or completeness of scanned copies of this plan sheet.</small>					
<small>The Registered Civil Engineer for the project is responsible for the selection and proper application of the component design and any modifications shown.</small>					



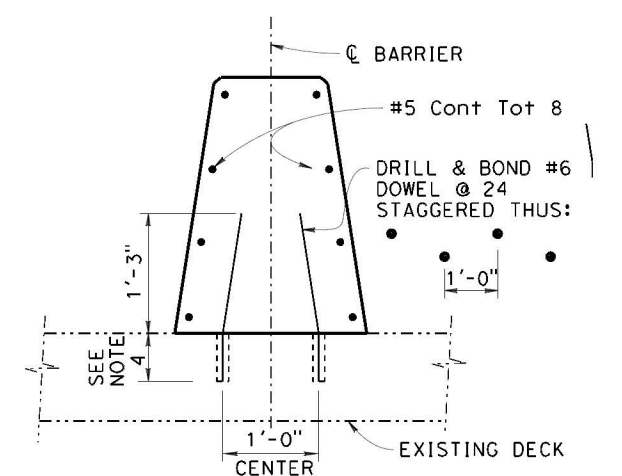
MODIFIED TYPE 60A.1 OR 60SA.1



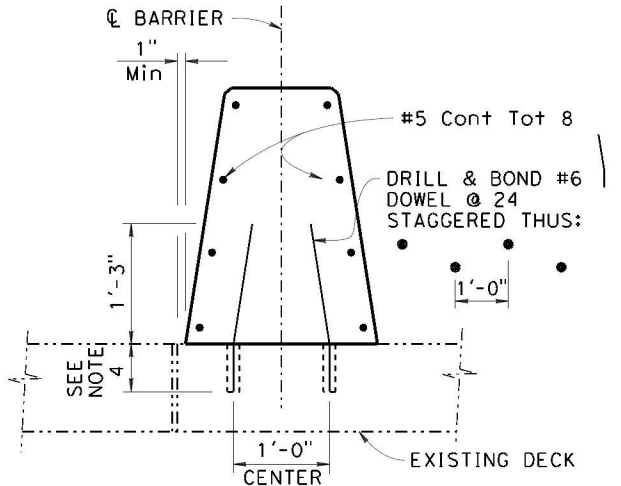
PLAN CONNECTION TO STRUCTURE
1/2" = 1'-0"



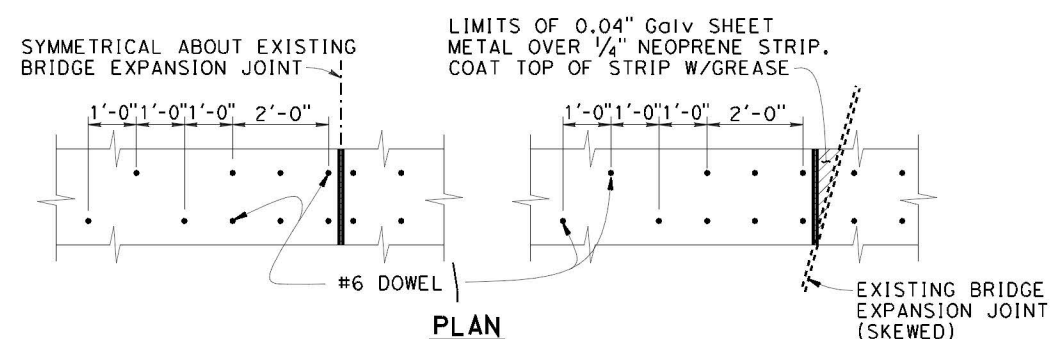
ELEVATION CONNECTION TO STRUCTURE
1/2" = 1'-0"



MODIFIED TYPE 60A.2 OR 60SA.2



MODIFIED TYPE 60A.5 OR 60SA.5

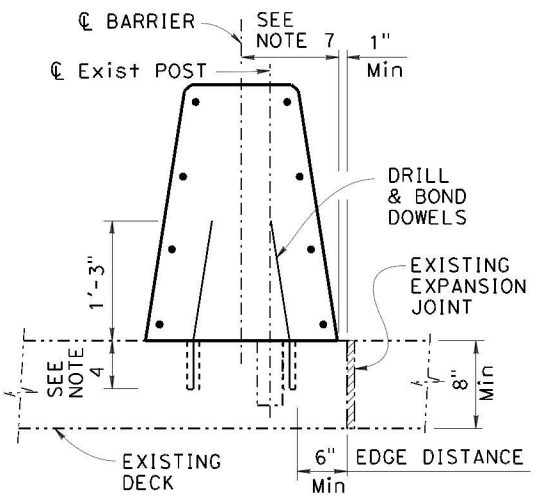
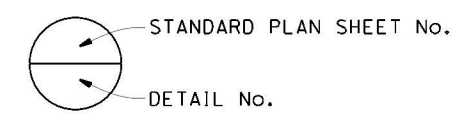


PLAN DOWEL SPACING AT EXPANSION JOINT
1/2" = 1'-0"

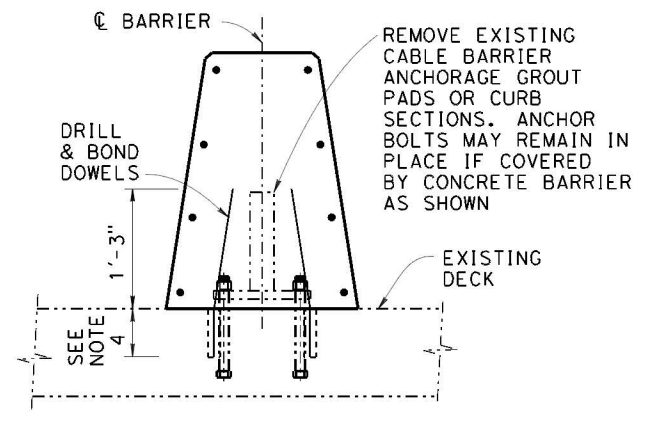
- NOTES:**
1. Transverse expansion joints in concrete barrier shall match all deck joints.
 2. Remove all existing curbs and dikes.
 3. Existing components of Cable Barrier may be altered and incorporated in Concrete Barriers as indicated. The existing Cable Barrier shall be removed when it is not on the centerline of the new Concrete Barrier.
 4. Depth of drilled hole equals depth of slab minus 1/2", 6" minimum.
 5. Minor adjustments may be made in dowel spacing to clear main reinforcement.
 6. Transitions to match adjacent "Type 60A" Barrier shall have minimum flare of 20:1 off the structure.
 7. Barrier to be doweled on either side of deck joints.
 8. For Concrete Barrier Type 60A details not shown, see STANDARD PLAN A76A. For Concrete Barrier Type 60SA details not shown, see STANDARD PLANS A76G.

LEGEND:

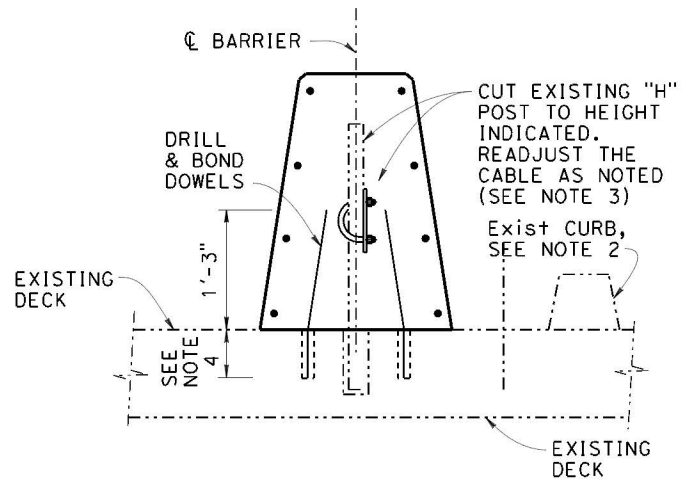
----- - Indicates existing structure
 ———— - Indicates new structure



EXISTING POST HOLE
TYPE 1



AT BOLTED ANCHORAGE PLATE
TYPE 2



AT POST HOLES
TYPE 3

NOTE:
THE CONTRACTOR SHALL VERIFY ALL CONTROLLING FIELD DIMENSIONS BEFORE ORDERING OR FABRICATING ANY MATERIAL.

NOTE:
For details not shown, see "TYPE 60A.1 OR 60SA.1"

ASSUMED EXISTING ANCHORAGE CONDITIONS AND DETAILS

SCALE: 1" = 1'-0" except as noted

BRIDGE STANDARD DETAILS			STATE OF CALIFORNIA DEPARTMENT OF TRANSPORTATION		DIVISION OF ENGINEERING SERVICES		BRIDGE NO.	
xs16-100 <small>FILE NO.</small>	January 2017 <small>APPROVAL DATE</small>	<small>The components of the Bridge Standard Details have been prepared under the responsible charge of the Technical Owner, a registered civil engineer in the State of California.</small>					POST MILE	
<small>Refer to: http://www.dot.ca.gov/hq/esc/techpubs/manual/bridgemanuals/bridge-standard-detail-sheets/index.html</small>			<small>FILE => \$REQUEST</small> <small>USERNAME => \$USER</small>		<small>ORIGINAL SCALE IN INCHES FOR REDUCED PLANS</small> 0 1 2 3		CONCRETE BARRIER TYPE 60A & TYPE 60SA MOD	
<small>TIME PLOTTED => \$TIME</small>			<small>DATE PLOTTED => \$DATE</small>		<small>UNIT: PROJECT NUMBER & PHASE:</small>		<small>CONTRACT NO.:</small>	
					<small>DISREGARD PRINTS BEARING EARLIER REVISION DATES</small>		<small>REVISION DATES</small> 5-28-14 5-14-16 1-17-17	
					<small>SHEET</small>		<small>OF</small>	