

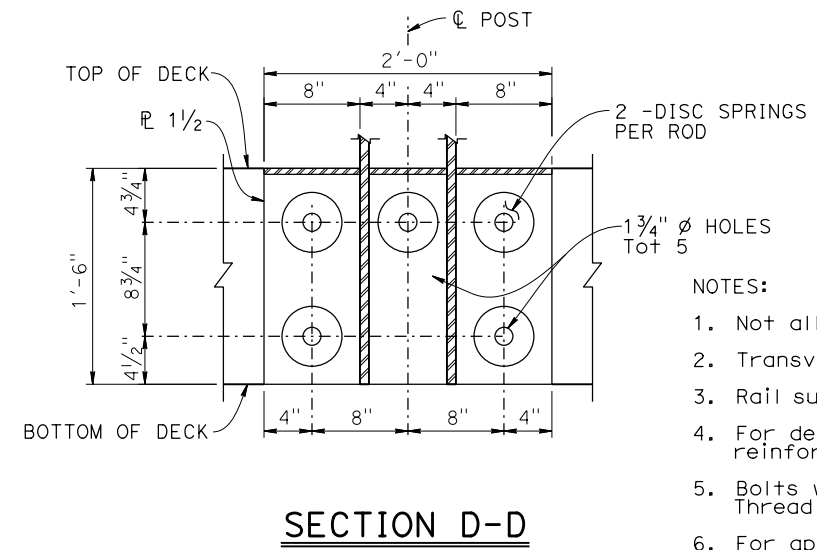
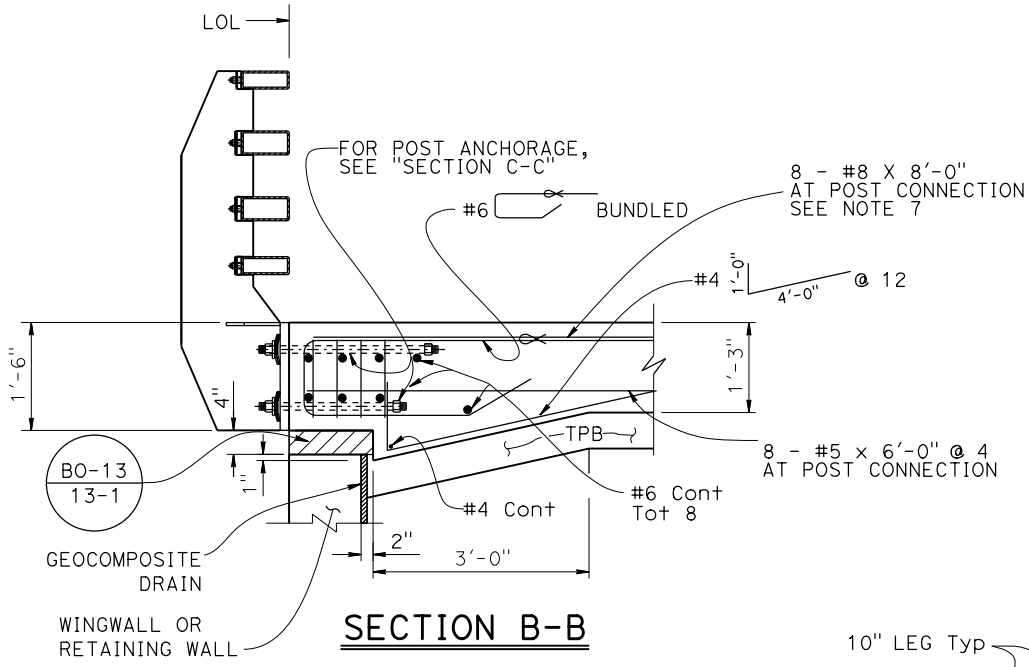
Dist	COUNTY	ROUTE	POST MILES TOTAL PROJECT	SHEET No.	TOTAL SHEETS
				X	

REGISTERED CIVIL ENGINEER	DATE	X
PLANS APPROVAL DATE		

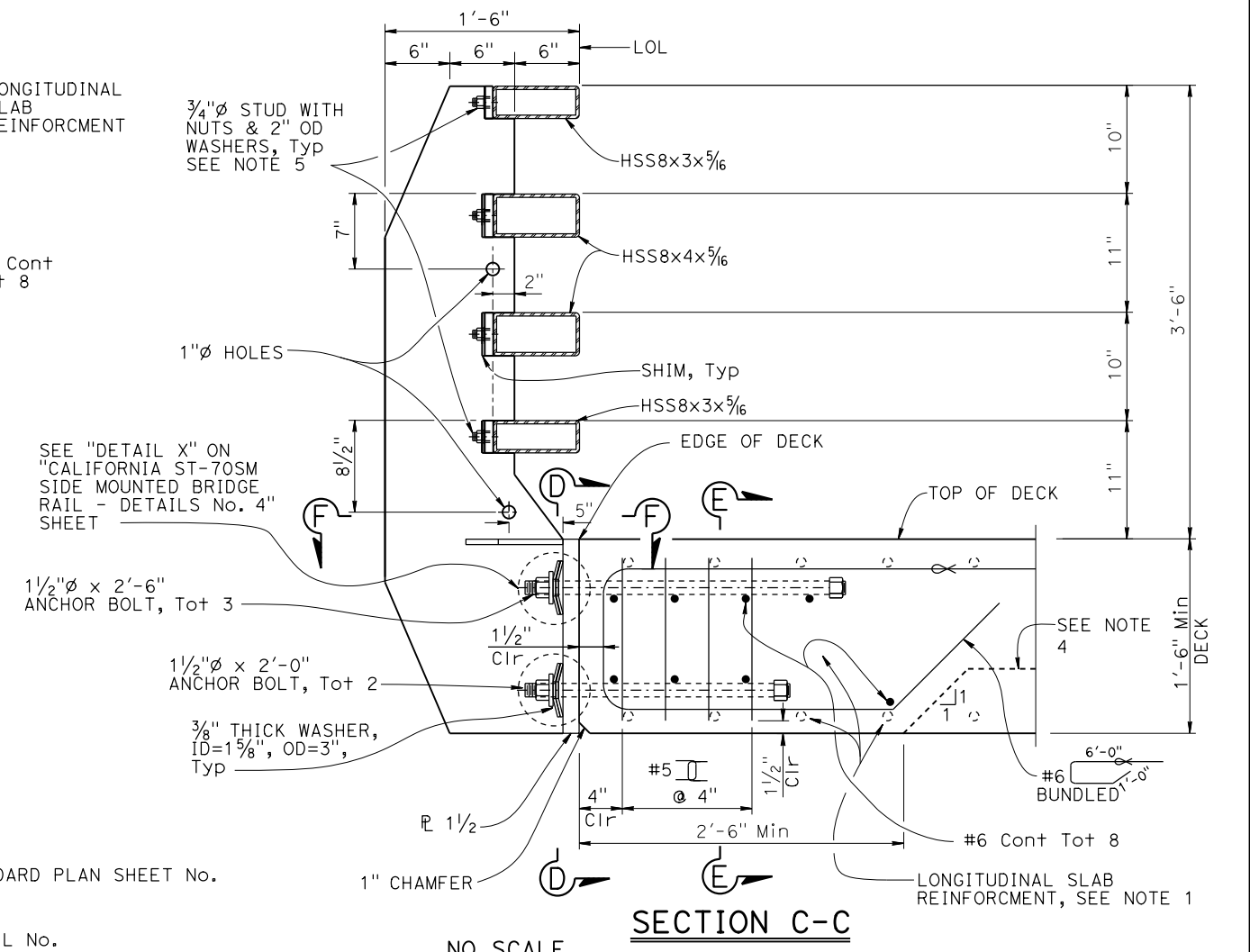
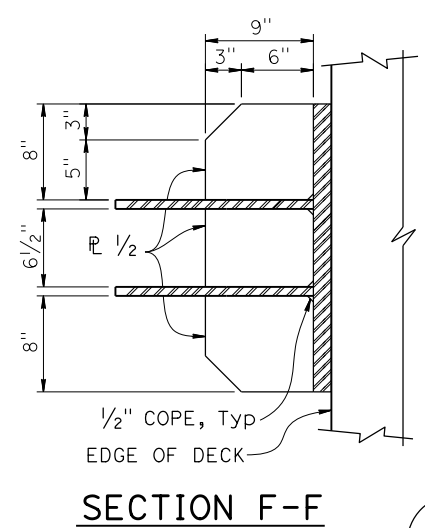
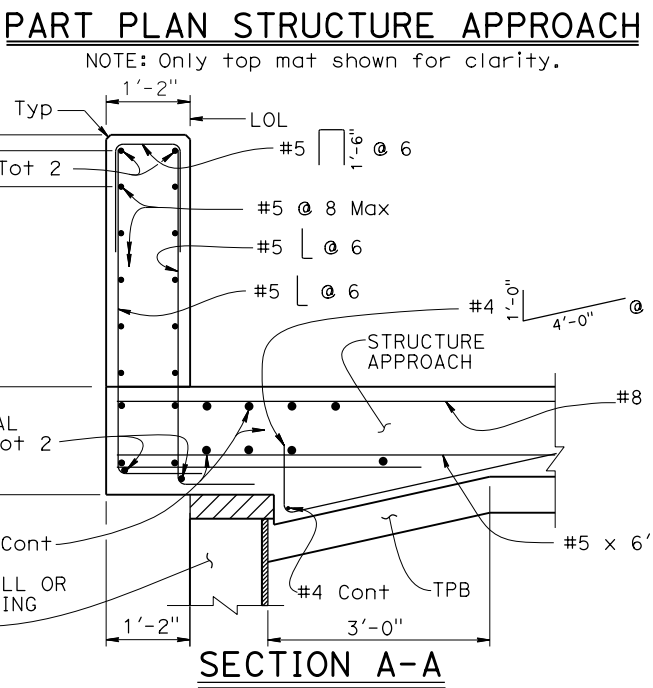
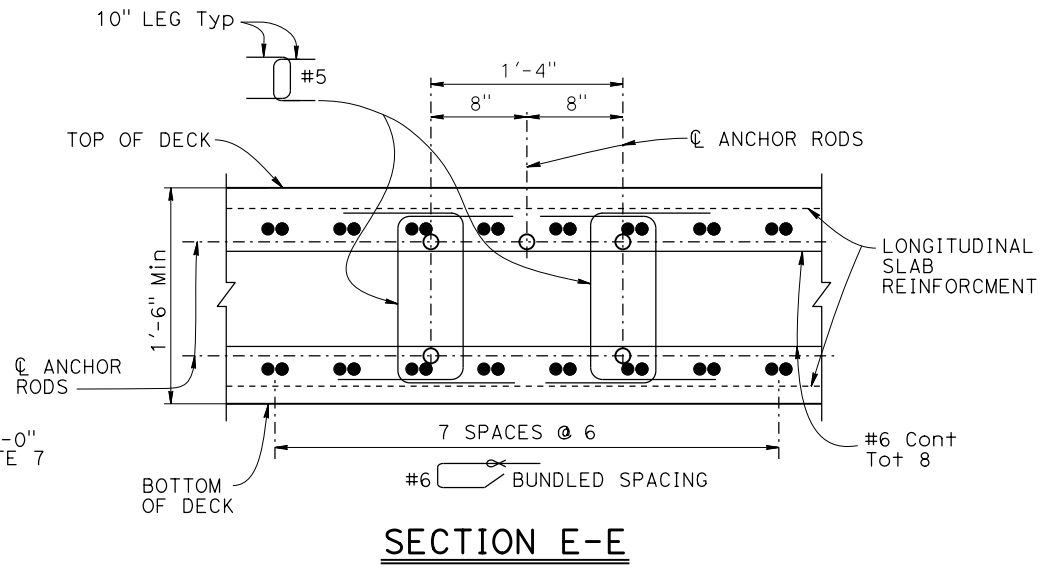
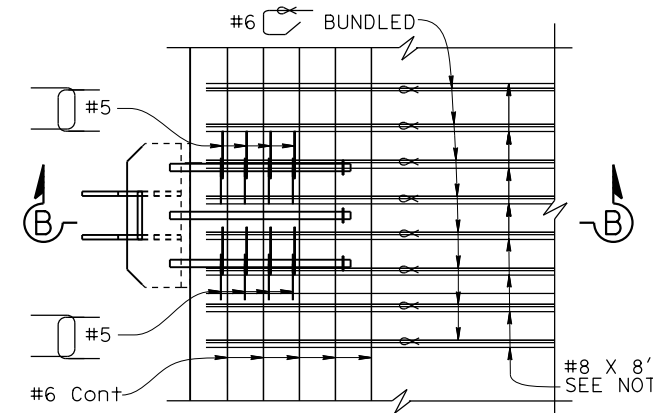
REGISTERED PROFESSIONAL ENGINEER	No.	X
	Exp.	X
CIVIL		
STATE OF CALIFORNIA		

THE STATE OF CALIFORNIA OR ITS OFFICERS OR AGENTS SHALL NOT BE RESPONSIBLE FOR THE ACCURACY OR COMPLETENESS OF SCANNED COPIES OF THIS PLAN SHEET.

THE REGISTERED CIVIL ENGINEER FOR THE PROJECT IS RESPONSIBLE FOR THE SELECTION AND PROPER APPLICATION OF THE COMPONENT DESIGN AND ANY MODIFICATIONS SHOWN.



- NOTES:
- Not all deck reinforcement is shown for clarity. See PROJECT PLANS.
 - Transverse deck and approach slab reinforcement to be continuous into anchorage block.
 - Rail surface must have full contact with railing post. Use shim plates as needed.
 - For deck thickness less than 1'-6", bottom transverse deck reinforcement must be adjusted to avoid anchorage block.
 - Bolts with nut and washers to be snug tightened, unless noted otherwise. Thread locking system must be applied at all bolted connections.
 - For approach slab details, see "STANDARDS PLANS". Approach slab reinforcement is not shown for clarity.
 - The #8 rebars shown are only required where disc springs are omitted at end posts next to thrie beam barrier.
 - See "CALIFORNIA ST-70SM SIDE MOUNTED BRIDGE RAIL DETAILS No. 6" for additional approach transition end block reinforcement details.
 - For location of "SECTION A-A", SECTION "B-B" and SECTION C-C", see CALIFORNIA ST-70SM SIDE MOUNTED BRIDGE RAIL DETAILS No. 1" sheet.



* Although approach slab thickness is greater than Std Plans, use Std Plan reinforcement.

BRIDGE STANDARD DETAILS			STATE OF CALIFORNIA			DIVISION OF ENGINEERING SERVICES			BRIDGE No. XX-XXXX			X		
xs16-115-2	October 2024	The components of the Bridge Standard Details have been prepared under the responsible charge of the Technical Owner, a registered civil engineer in the State of California.	DEPARTMENT OF TRANSPORTATION						POST MILE X.X			CALIFORNIA ST-70SM SIDE MOUNTED BRIDGE RAIL DETAILS No. 2		
Refer to: http://www.dot.ca.gov/hq/esc/techpubs/manual/bridgemanuals/bridge-standard-detail-sheets/index.html	DATE PLOTTED => 10-OCT-2024	TIME PLOTTED => 13:08	ORIGINAL SCALE IN INCHES FOR REDUCED PLANS	0	1	2	3	UNIT: XXXX	COUNTY/ROUTE/ZONE: XXX/XXX/X	DISREGARD PRINTS BEARING EARLIER REVISION DATES	REVISION DATES	SHEET	OF	
FILE NO.	APPROVAL DATE		FILE => 202410xs16-115-2.dgn					PROJECT NUMBER & PHASE: XXXXXXXXXX1	CONTRACT No.: XX-XXXXX4			X	X	