

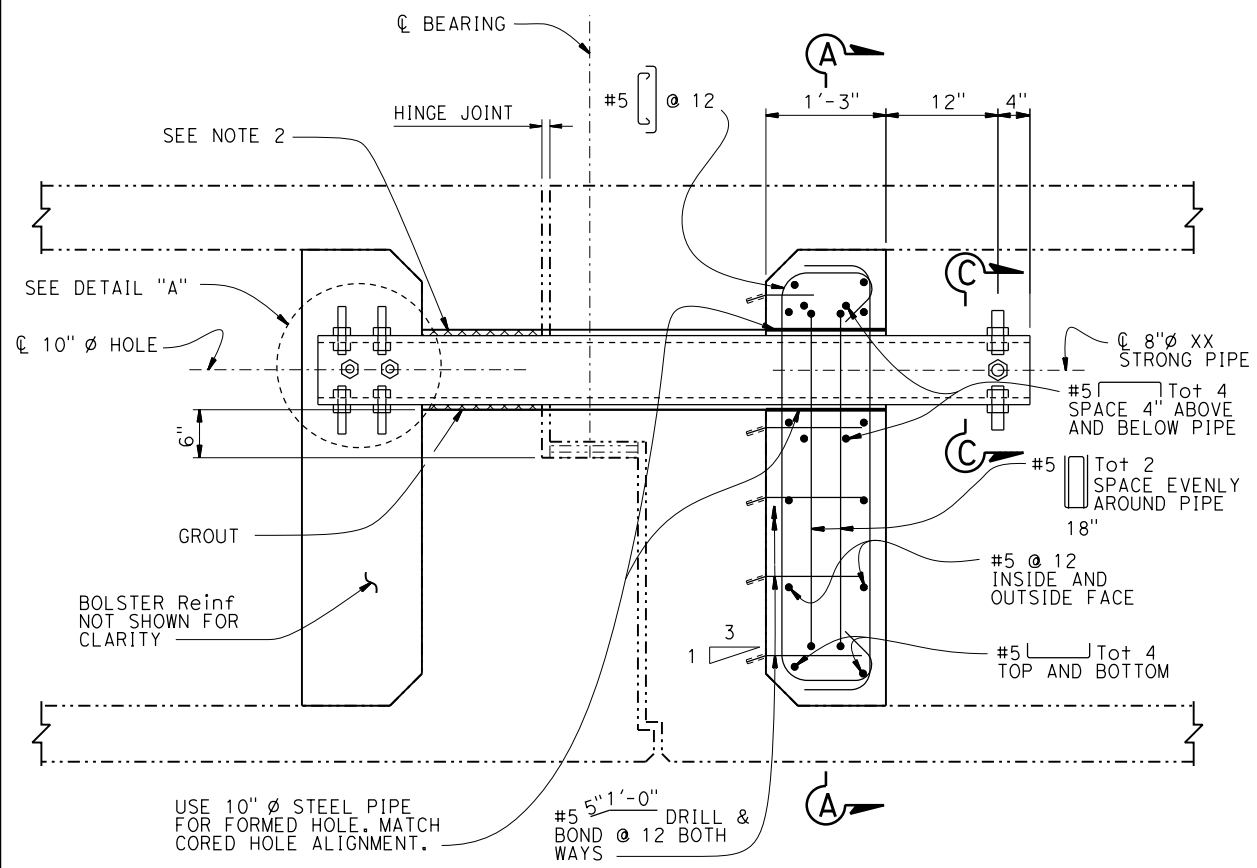
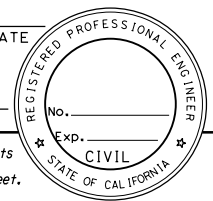
| DIST | COUNTY | ROUTE | POST MILES TOTAL PROJECT | SHEET No. | TOTAL SHEETS |
|------|--------|-------|--------------------------|-----------|--------------|
| | | | | | > |

REGISTERED CIVIL ENGINEER DATE _____

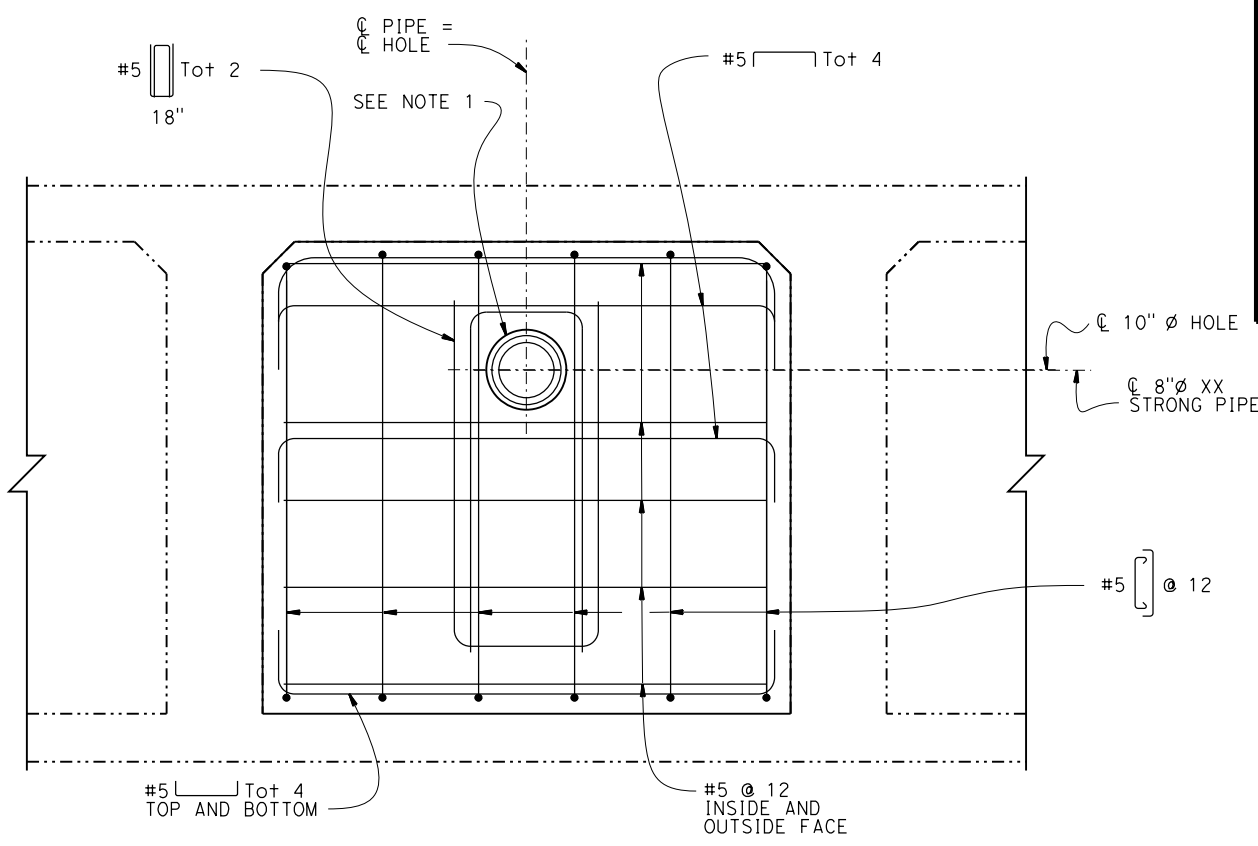
PLANS APPROVAL DATE _____

The State of California or its officers or agents shall not be responsible for the accuracy or completeness of scanned copies of this plan sheet.

The Registered Civil Engineer for the project is responsible for the selection and proper application of the component design and any modifications shown.

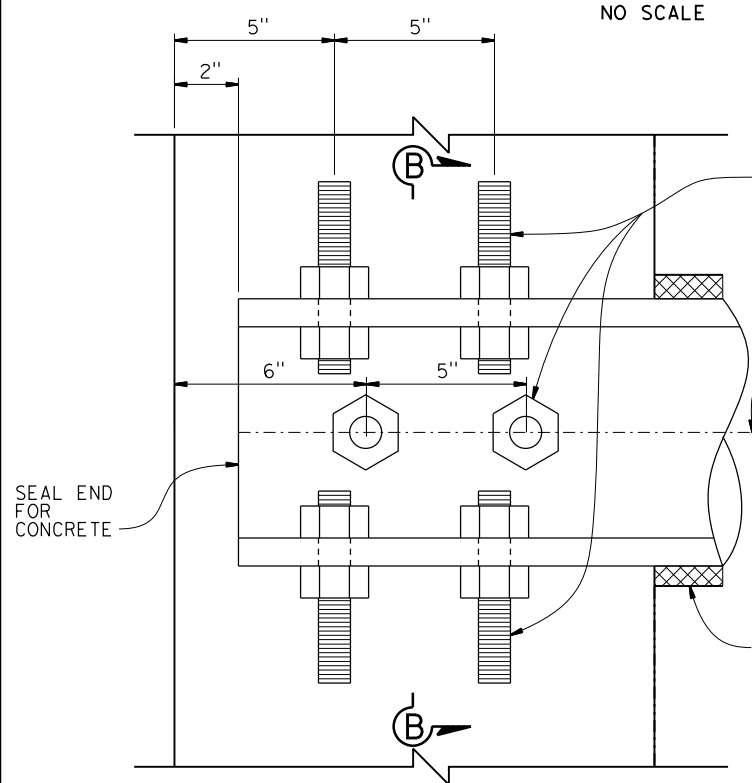


PIPE EXTENDER ELEVATION
NO SCALE

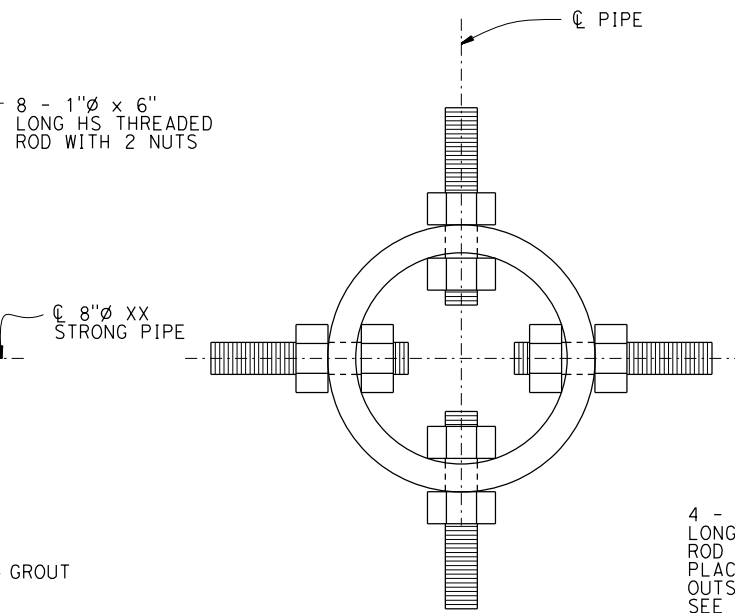


SECTION A-A
NO SCALE

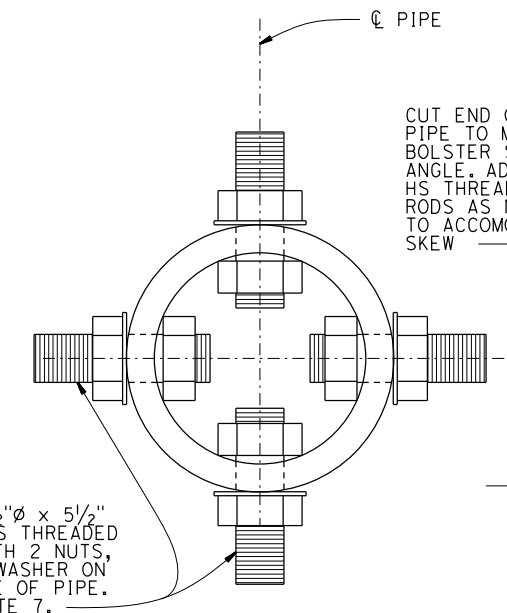
- PIPE SEAT EXTENDER NOTES**
1. Core 10"Ø hole parallel to girders for 8"Ø XX Strong pipe.
 2. Place pipe 3/4" down from top of cored hole along the entire length and grout annulus space around the support end of pipe prior to placing bolster concrete. Seal end of grouted region to prevent grout from entering hinge opening.
 3. Adjust bolster reinforcement to accommodate bridges with skews.
 4. If equalizer bolts are encountered, adjust cored hole horizontally to clear bolts by 6".
 5. Galvanize 8"Ø XX Strong pipe. Paint inside drilled holes, ends, and outside surfaces of pipe that are not galvanized with zinc rich primer.
 6. Block out bolsters to allow drainage of soffit vents as needed.
 7. Use thread locking system. Torque to 300 ft-lb min.
 8. Adjust C of drilled hole for HS Threaded Rods so the tip of Rod has 2" min cover concrete.



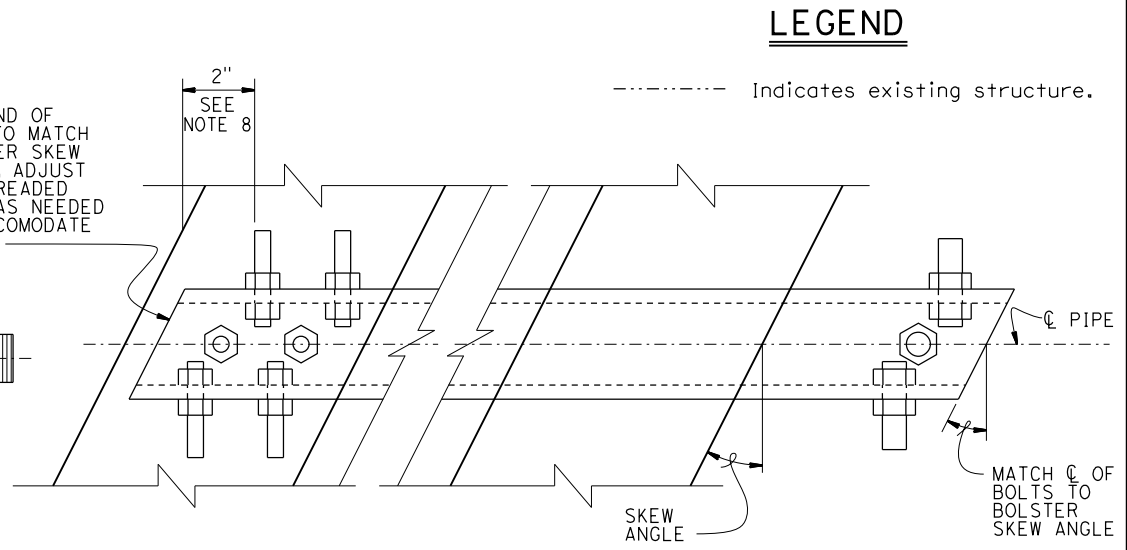
DETAIL "A"
NO SCALE



SECTION B-B
NO SCALE



SECTION C-C
NO SCALE



PART PLAN
BRIDGES WITH SKEWS
NO SCALE

LEGEND
----- Indicates existing structure.

BRIDGE STANDARD DETAILS

| | | |
|----------------------------|-------------------------------|---|
| xs7-082 FILE NO. | October 2016 APPROVAL DATE | The components of the Bridge Standard Details have been prepared under the responsible charge of the Technical Owner, a registered civil engineer in the State of California. |
|----------------------------|-------------------------------|---|

| | | |
|--------------------|------------------------|------------------------|
| FILE => \$REQUEST | TIME PLOTTED => \$TIME | DATE PLOTTED => \$DATE |
| USERNAME => \$USER | | |

STATE OF CALIFORNIA
DEPARTMENT OF TRANSPORTATION

DIVISION OF ENGINEERING SERVICES

| | |
|--|--|
| BRIDGE NO. | |
| POST MILE | |
| 200 KIP PIPE SEAT EXTENDER (RETROFIT) | |