



Caltrans Wildlife Connectivity Program Report

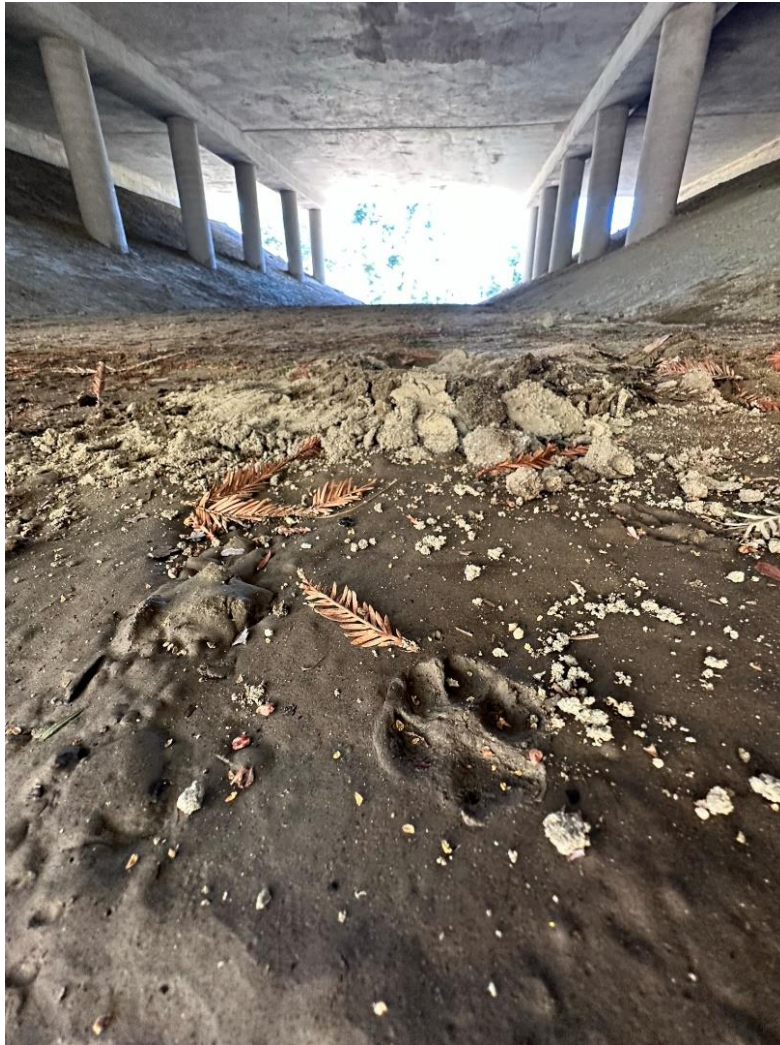


Photo: Highway 17, Laurel Curve (District 5)

California Department of Transportation
Headquarters Division of Environmental Analysis
Office of Fish and Wildlife Connectivity

July 1, 2024

Table of Contents

List of Abbreviations 1

Executive Summary 2

 Background 2

 Caltrans Fish and Wildlife Connectivity Program Overview 4

 Science and Data..... 4

 Partnerships 5

 Engineering 6

 Permitting Efficiencies..... 7

 Funding..... 7

2024 Active Wildlife Connectivity Remediation Locations 8

2024 Planned Funding – Wildlife Connectivity Locations 16

2024 Priority Wildlife Connectivity Locations Requiring Funding 24

List of Tables

Table 1. 2024 Active Wildlife Connectivity Remediation Locations 8

Table 2. 2024 Planned Funding – Wildlife Connectivity Locations..... 16

Table 3. 2024 Priority Wildlife Connectivity Locations Requiring Funding 24

List of Figures

Figure 1. Wildlife Connectivity Permeability Assessment..... 5

Figure 2. Implement Collaboration - Wildlife Passage Advisory Committees 6

Figure 3. 2024 Active Wildlife Connectivity Remediation Locations 15

Figure 4. 2024 Planned Funding – Wildlife Connectivity Locations..... 23

Figure 5. 2024 Priority Wildlife Connectivity Locations Requiring Funding 37

List of Abbreviations

Abbreviation	Full Description
C	Candidate Species
CA	California
CDFW	California Department of Fish and Wildlife
CDPR	California Department of Parks and Recreation
DWR	California Department of Water Resources
CEHC	California Essential Habitat Connectivity
CESA	California Endangered Species Act
CTC	California Transportation Commission
DEA	Division of Environmental Analysis
E	Endangered Species
EB	East-Bound
FESA	Federal Endangered Species Act
FHWA	Federal Highways Administration
FWC	Fish and Wildlife Connectivity
FishPAC	Fish Passage Advisory Committee
FP	Fully Protected
ID	Identification
M	Managed herd
PID	Project Initiation Document
P	Proposed Endangered Species
PM	Post Mile
SC	Species of Special Considerations
SHC	Streets and Highways Code
SHOPP	State Highway Operation and Protection Program
SHS	State Highway System
SHSMP	State Highway System Management Plan
T	Threatened Species
US FWS	United States Fish and Wildlife Service
USFS	United States Forest Service
WB	West-Bound
WildPAC	Wildlife Passage Advisory Committee
3C	California Conservation Corps

Executive Summary

Streets and Highways Code, Section 158.1 (c), requires the California Department of Transportation (Caltrans) to develop and publish a list of funded transportation projects with wildlife features that address wildlife connectivity needs on its website by July 2024. The department shall update the inventory and the project list biennially, at a minimum, and may update the inventory or the list more often, as needed.

Background

In 2022 Assembly Bill 2344 was passed and is codified in Streets and Highways Code (SHC), Section 158, which requires Caltrans to assess, prioritize, and fund projects to remediate priority barriers to wildlife on the State Highway System (SHS).

In July 2023 Caltrans created a new office of Fish and Wildlife Connectivity (FWC) and began by hiring a manager and staff. The FWC office reports to the Caltrans headquarters Division of Environmental Analysis (DEA) and supports department wide implementation and reporting for Streets and Highways Code Section 156 (fish passage), and Section 158 (wildlife movement), and manages the Fish and Wildlife Connectivity inventory as part of the State Highway Operation and Protection Program (SHOPP). The FWC SHOPP program was created in 2020, with a focus on salmon and steelhead priority barrier remediation locations and was expanded in 2022 to include an inventory sub-category of priority wildlife connectivity barriers.

Caltrans and the California Department of Fish and Wildlife (CDFW) have been partnering on wildlife connectivity efforts for many years. In February of 2010, the 'California Essential Habitat Connectivity Project: A Strategy for Conserving a Connected California' (CEHC), was published by Caltrans and CDFW, funded by Caltrans and the Federal Highways Administration (FHWA). Other contributing partners included the California Department of Parks and Recreation (CDPR), California Department of Water Resources (DWR), the United States Fish and Wildlife Service (USFWS), and other state, federal, and local technical advisory experts. Many of Caltrans current active (funded) and planned funded, wildlife connectivity projects were informed by this multi-year collaboration and report.

CDFW has also published priority wildlife connectivity reports, the most recent iteration being 'Restoring California's Wildlife Connectivity 2022'. The 2022 report lists linear infrastructure route segments on the SHS, railroads, canals, high-speed rail, and local roads. The report identifies SHS route segments that CDFW regions identified as needing wildlife barrier remediation. Science and data supporting permeability needs for some identified route segments have been provided to Caltrans. CDFW continues to share studies supporting needs for other identified priority route segments.

This report summarizes the identification and evaluation of available science and data for both Caltrans and sponsor led wildlife connectivity locations on the SHS. All locations were identified by Caltrans districts, who for many years have conducted varying levels

of coordination with CDFW, USFWS, and other state, federal, local partners, and tribal nations.

Based on the evaluation of available science, data, and other information provide to date, Caltrans and partners are currently developing **31** active (funded) wildlife connectivity remediation locations. Of the **31** active (funded) wildlife connectivity locations, **18** locations are within areas identified by the CEHC, **15** locations are within CDFW priority route segments, and **20** locations are within protected or semi-protected lands owned and managed by the US Forest Service (USFS), CDFW, CDPR, and others.

Districts are developing planning studies for Caltrans led, capital wildlife connectivity locations that are in the pre-project phase, working toward Project Initiation Documents (PID). PID's will identify potential project alternatives, provide a record of purpose-and-need, and estimate the scope, cost, and schedule. Capital locations will need to be allocated by the California Transportation Commission (CTC) before they're considered active (funded) projects. There are **37** wildlife connectivity barrier locations currently in the planning stage. Of the **37** planned funding locations, **19** are within areas identified by the CEHC, **22** locations are within CDFW priority route segments, and **29** locations are within protected or semi-protected lands owned and managed by the USFS, CDPR, US National Park Service (US NPS), and others.

Caltrans districts have identified priority barrier locations based on previous and ongoing state, federal, and local collaborations. Information submitted in consideration of departmental priorities include, studies and reports, species diversity and habitat suitability, tracking and camera data, stakeholders, hotspot carcass data, landscape, and land use analysis, as well as other available information. Based on information submitted to date, Caltrans has identified **76** priority wildlife connectivity barrier locations that require funding. Of the **76** priority wildlife barrier locations, **42** are within areas identified by the CEHC, **42** locations are within CDFW priority route segments, and **43** locations are within protected or semi-protected lands owned and managed by the USFS, CDPR, US NPS, and others.

This report represents the first required baseline inventory in an ongoing effort to identify and fund priority wildlife connectivity barriers on the SHS. Locations included in this inventory were identified by Caltrans districts and partners in consideration of current wildlife connectivity barrier remediation efforts and priorities within respective district areas. Consultation with key stakeholders, including CDFW, relied primarily on coordination that pre-dated the new legislation.

A Pilot reconnaissance Wildlife Connectivity Permeability (1st pass) assessment to collect facility data, photos, and landscape information will begin in August 2024. Input from state, federal, and local partners in consideration of science and data, and other information to further the departments understanding of wildlife connectivity needs is encouraged. Caltrans anticipates holding a meeting in the Fall of 2024 to provide further information and engagement and looks forward to continued progress with partners on our goal of improving wildlife movement in California.

Caltrans Fish and Wildlife Connectivity Program Overview

Caltrans will continue to make progress on SHS fish and wildlife connectivity remediation by supporting the successful Fish Passage Advisory Committees (FishPAC), and by implementing new Wildlife Passages Advisory Committees (WildPAC) partnerships. Like FishPAC, the WildPAC's will share science and data, prioritize barrier locations with the greatest benefit to species movement needs, evaluate opportunities to fund priority barriers, and support implementation of successful fish and wildlife barrier remediation projects on the SHS.

Due to complex considerations associated with planning, project delivery, funding, and implementation of successful fish and wildlife connectivity projects on the SHS, a comprehensive approach is needed to focus on science and data collection, internal and external partnerships, updated guidance, expert engineering coordination, streamlined project delivery and permitting, and increased funding analysis.

Science and Data

Caltrans is one of the largest landowners in California, managing approximately 15,181 miles of SHS. Infrastructure, including roadways, railways, canals, walls, fencing, and other human made features bisect high quality habitat, creating barriers for over 180 threatened or endangered species listed under the California Endangered Species Act (CESA) and/or the Federal Endangered Species Act. Habitat loss through landscape fragmentation and development have led to isolated species populations and reduced genetic dispersal. Improving connectivity to fragmented habitats will aid in the resilience of terrestrial and aquatic species to drought, wildfire, and other climate change stressors, and further reduce animal/vehicle collisions. As lanes have been added and traffic has increased, animal/vehicle roadkill rates have also increased.

Many terrestrial and aquatic connectivity deficiencies on the SHS correlate with existing, undersized culvert and bridge facilities. When roadways were originally constructed, landscape features such as watersheds and mountain draws were filled to create the roadway prism, therefore culverts and bridges are often partial or total barriers to fish and wildlife. These barriers restrict species movement and block access to high quality habitat. In privately owned urban areas and areas significantly impacted by agriculture, stream migration corridors are often the only protected movement corridors for both aquatic and terrestrial species.

Proactively addressing fish and wildlife connectivity on the SHS will move Caltrans forward as stewards of California's landscape and reduce fragmentation of habitat caused by roadways that contribute to the steady decline of threatened, endangered, special status, and other common species.

Since 2020 Caltrans and the California Conservation Corps (3C) have collaborated to assess fish passage barriers on the SHS. From February 2020 to May 2024, the 3C's assessment teams completed 3,332 reconnaissance (1st pass) fish passage assessments, using innovative software, field tablet devices, and geospatial technology for data

collection, quality control, and information sharing. This technology efficiently conveys assignments to 3C's assessment teams, empowering them to collect high-quality data and photographs statewide. By using this technology Caltrans has significantly increased the rate of assessments needed to complete the SHS fish passage barrier inventory analysis. This innovative technology requires a fraction of the time of conventional data verification and input methods, reducing time and labor.

In March of 2024 the Caltrans/3C's partnership was renewed and expanded. The 3C's will continue to focus on completing the current estimated 2,202 remaining reconnaissance (1st pass) fish passage assessments, and in August of 2024, the 3C's will begin to pilot a reconnaissance Wildlife Connectivity Permeability Assessment to collect facility data, photos, and landscape information (Figure 1). This baseline assessment will be evaluated by professional biologists in consideration of additional higher-level professional (detailed) assessment needs. Reconnaissance assessment data will be used to support wildlife connectivity barrier prioritization collaborations.

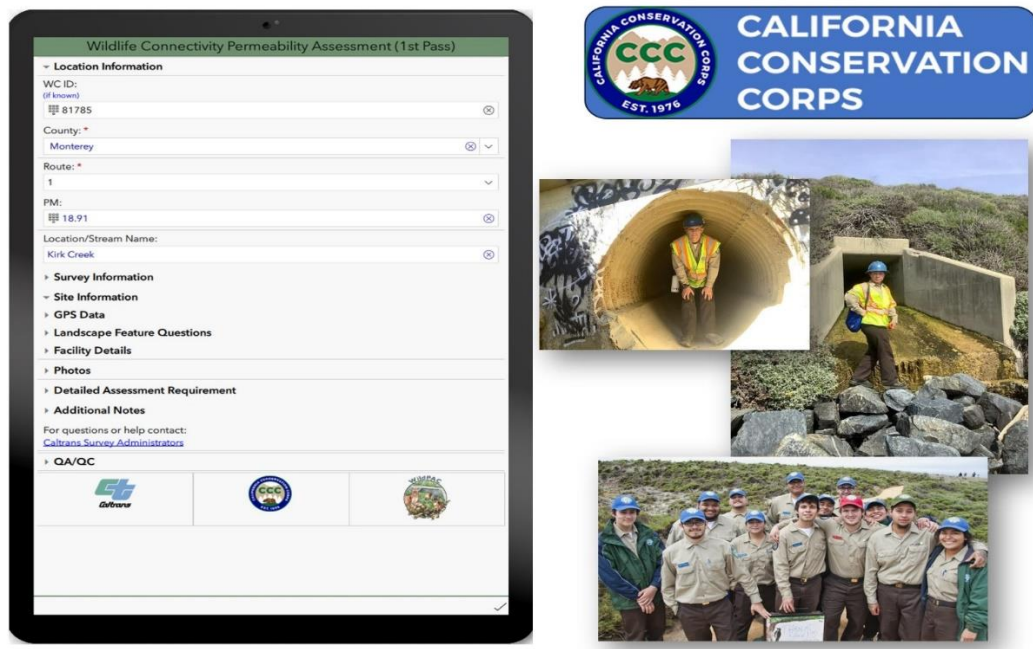


Figure 1. Wildlife Connectivity Permeability Assessment

Partnerships

In 2018 Caltrans implemented the last of six statewide Fish Passage Advisory Committees (FishPAC) to increase statewide collaborations for salmon and steelhead barrier remediation. The FishPACs share science and data, prioritize barriers, identify funding opportunities, coordinate on engineering solutions, educate, and support project delivery to improve long-term barrier remediation outcomes.

As support becomes available, Caltrans will work with partners to develop similar Wildlife Passage Advisory Committees (WildPAC). Coordination between Caltrans and the WildPAC partnerships is essential to achieving a fully vetted priority inventory and improving partnership support of science and data sharing, prioritization, funding opportunities, project delivery, and implementation of barrier remediation projects. See Figure 2 below, demonstrating the WildPAC website, which is currently under development, and which will eventually be used to share information, and provide member access to draft working documents, location data, and other information.



Figure 2. Implement Collaboration - Wildlife Passage Advisory Committees

Engineering

Fish and wildlife connectivity remediation design solutions will need to consider system performance including service life, constructability, seismicity, transport trucking, maintainability, safety, species openness needs, and other requirements.

In 2015 Caltrans, CDFW, and the National Marine Fisheries Service (NMFS) created the Fish Passage Interagency Engineering Work Group (Working Group). The Working Group convenes monthly to collaborate on training, modeling and design guidance, research, and other information sharing. Member expertise includes hydraulic engineering, structures and foundations design, watershed modeling, maintenance, and design guidance for fish passage remediation and channel restoration. The Working Group research panel partnered with Humboldt Cal Poly to complete the Fish Passage Engineering Efficacy research (July 2022) and continue to coordination on recommendation implementation.

The Working Group will expand to address both fish and wildlife connectivity engineering needs, to include adding new expert engineers from interested state and federal connectivity partners.

Permitting Efficiencies

For many years Caltrans has engaged with state and federal permitting partners to develop opportunities for streamlined programmatic permitting fish passage and multi-species barrier remediation projects, and continue to work with CDFW for restoration permitting efficiencies to include the innovative [Cutting the Green Tape Program](#).

Fish and wildlife connectivity projects are environmental enhancement and restoration projects. Full span fish passage and wildlife connectivity remediation projects benefit aquatic and terrestrial movement to high quality habitat areas and further improve stream process and natural functions.

Funding

Caltrans continues to develop the fish and wildlife priority inventory in the State Highway Operation and Protection Program (SHOPP) as a component of the State Highway System Management Plan (SHSMP). The SHSMP is a performance driven and integrated plan for the SHS. The plan integrates rehabilitation, maintenance, and operations into a single 10-year management strategy, which is updated biennially. Like all other SHS assets, fish and wildlife connectivity priorities are managed and tracked to align with other SHOPP investments and resulting performance objectives.

Fish passage barrier remediation was introduced as a new performance objective in the 2021 SHSMP. The 2023 SHSMP included an updated fish passage inventory and added a new wildlife priority inventory. The fish and wildlife inventories have been updated for inclusion in the 2025 SHSMP.

2024 Active Wildlife Connectivity Remediation Locations

Caltrans is currently developing projects to remediate **31** active (funded) barriers to fish and wildlife on the SHS. Of the **31** active (funded) wildlife connectivity locations, **18** locations are within areas identified by the California Essential Habitat Connectivity (CEHC), **15** locations are within CDFW priority route segments, and **20** locations are within protected or semi-protected lands owned and managed by the USFS, CDFW, CDPR, and others.

Table 1 below, lists the active (funded) fish and wildlife connectivity barrier remediation locations that are Caltrans led capital projects, and special funded (SF) projects are underlined. Special funded projects are led and funded by other project sponsors, with varying levels of Caltrans oversight and funding. Figure 3 is a map of the locations listed in Table 1.

Table 1. 2024 Active Wildlife Connectivity Remediation Locations

Map #	Case ID	Sub-category ¹	District	County-Route-PM	Location Name	Solution Type	CEHC ²	CDFW ³ Priority	Land Ownership	Species ⁴
1	800001	Fish ⁵	1	Humboldt – 36 – PM 4.39	Ward Creek	New Bridge	No	No	Private	Steelhead Trout (T), Coho Salmon (T), Chinook Salmon (T), Pacific Marten, Coastal Distinct Population Segment (E), Northern Red-legged frog (SC), Foothill yellow-legged frog (SC), Black bear, Bobcat, Coyote, Deer, Grey fox, Mountain lion

¹ Caltrans manages two priority inventories, (1) salmon and steelhead priority barriers (fish), and (2) wildlife connectivity priority barriers (wildlife). Post-construction studies demonstrate that full span (bankfull width) remediations improve fish and wildlife permeability.

² California Essential Habitat Connectivity Project: A Strategy for Conserving a Connected California.

³ Priority location based on CDFW priorities, most recently 'Restoring California's Wildlife Connectivity 2022' report.

⁴ Species occurrences identified by biologists based on available studies, evaluation of the California Natural Diversity Database or other tools. Status abbreviations are: (E) Endangered, (T) Threatened, (C) Candidate, (FP) Fully protected, (P) Proposed Endangered Species, (SC) Species of Special Considerations, (M) Managed herds, and common species.

⁵ Active fish passage locations can be viewed on the [Caltrans Fish Passage Story Map](#).

Map #	Case ID	Sub-category ¹	District	County-Route-PM	Location Name	Solution Type	CEHC ²	CDFW ³ Priority	Land Ownership	Species ⁴
2	800002	Fish	1	Humboldt – 101 – PM 0.88	Hartsook Creek	New Bridge	Yes	No	Private	Steelhead Trout (T), Coho Salmon (T), Chinook Salmon (T), Northwestern pond turtle (PT), Foothill yellow-legged frog (SC), Fisher (SC), Pacific marten, Black bear, Bobcat, Coyote, Deer, Grey fox, Mountain lion
3	201001	Fish	1	Humboldt – 254 – PM 4.18	Fish Creek	New Bridge	No	No	CA Dept. of Parks and Recreation	Steelhead Trout (T), Coho Salmon (T), Chinook Salmon (T), Foothill yellow-legged frog (SC), Fisher (SC), Pacific marten, Black bear, Bobcat, Coyote, Deer, Grey fox, Mountain lion
4	800004	Fish	1	Humboldt – 254 – PM 15.04	Mowry Creek	New Bridge	Yes	No	CA Dept. of Parks and Recreation	Steelhead Trout (T), Coho Salmon (T), Chinook Salmon (T), Pacific Marten, Coastal Distinct Population Segment (E), Foothill yellow-legged frog (SC), Fisher (SC), Black bear, Bobcat, Coyote, Deer, Grey fox, Mountain lion
5	201605	Fish	1	Humboldt – 254 – PM 40.83	Chadd Creek	New Bridge	Yes	No	CA Dept. of Parks and Recreation	Steelhead Trout (T), Coho Salmon (T), Chinook Salmon (T), Pacific Marten, Coastal Distinct Population Segment (E), Foothill yellow-legged frog (SC), Fisher (SC), Black bear, Bobcat, Coyote, Deer, Grey fox, Mountain lion

Map #	Case ID	Sub-category ¹	District	County-Route-PM	Location Name	Solution Type	CEHC ²	CDFW ³ Priority	Land Ownership	Species ⁴
6	201417	Fish	2	Siskiyou – 96 – PM 43.5	Cade Creek	New Bridge	No	No	US Forest Service	Coho Salmon (T), Chinook Salmon (SC), Steelhead Trout (SC), Northwestern pond turtle (PT), Foothill yellow-legged frog (SC), Ringtail (SC) Black bear, Bobcat, Coyote, Deer, Grey fox, Mountain lion
7	201418	Fish	2	Siskiyou – 96 – PM 57.0	Portuguese Creek	New Bridge	Yes	No	US Forest Service	Coho Salmon (T), Chinook Salmon (SC), Steelhead Trout (SC), Northwestern pond turtle (PT), Foothill yellow-legged frog (SC), Ringtail (SC) Black bear, Bobcat, Coyote, Deer, Grey fox, Mountain lion
8	20230201	Wildlife ⁶	2	Siskiyou – 97 – PM 19.77	SR 97 Elk Overcrossing	New Bridge Overcrossing	No	W008	Private	Gray wolf(E), Rocky Mountain elk - East Shasta Valley Herd (M), Black bear, Bobcat, Coyote, Deer
<u>9</u> (SF)	<u>80000000</u>	<u>Wildlife</u>	<u>3</u>	<u>Colusa – 20 – PM 10.07</u>	<u>Cortina Ridge Sawato Kamitlitarro</u>	<u>New Bridge Overcrossing</u>	<u>No</u>	<u>W013</u>	<u>Private</u>	<u>Badger (SC), Tule elk - Cashe Creek herd (M), Bobcat, Coyote, Deer</u>
10	20220306	Wildlife	3	El Dorado – 89 – PM 24.9	Meeks Creek	New Bridge	No	No	US Forest Service	Sierra Nevada yellow-legged frog (E), Lahontan cutthroat trout (T), Wolverine (T), Black bear, Bobcat, Coyote, Deer

⁶ Active wildlife connectivity locations can be reviewed on the [Caltrans Wildlife Connectivity Story Map](#).

Map #	Case ID	Sub-category ¹	District	County-Route-PM	Location Name	Solution Type	CEHC ²	CDFW ³ Priority	Land Ownership	Species ⁴
11	80000001	Wildlife	3	Placer – 80 – PM 43.5	Monte Vista 1	New Culvert	No	No	Private	Black bear, Bobcat, Coyote, Deer, Gray fox, Mountain lion
12	80000002	Wildlife	3	Placer – 80 – PM 47.9	Monte Vista 2	New Culvert	No	No	Private	Black bear, Bobcat, Coyote, Deer, Gray fox, Mountain lion
13	202232	Fish	4	Marin – 1 – PM 21.06	Tributary to Olema Creek	New Bridge	Yes	No	US National Park Service	Steelhead Trout (T), Coho Salmon (E), California Red-legged frog (E), California giant salamander (SC), Black bear, Bobcat, Coyote, Deer, Grey fox
14	80000003	Wildlife	5	San Luis Obispo – 46 – PM 54.0	SR 46 Widening – Antelope Grade	New Culvert	No	No	Private	San Joaquin kit fox (E), Mountain lion (C), Western spadefoot (P), Bobcat, Coyote, Deer
15	80000004	Wildlife	5	San Luis Obispo – 46 – PM 57.0	SR 46 Widening – Wye Segment	New Culvert	No	No	Private	San Joaquin kit fox (E), Mountain lion (C), Western spadefoot (P), Bobcat, Coyote, Deer
16	20230501	Wildlife	5	Santa Barbara – 101 – PM 46.37	Gaviota Pass WCPP	New Bridge	Yes	W163	CA Dept. of Parks and Recreation	CA red-legged frog (T), Mountain lion (C), Bobcat, Coyote, Deer, Gray fox
17	201632	Fish	5	Santa Barbara – 101 – PM 46.92	Gaviota Creek Channel Restoration	Check Dam Drop Removal	Yes	W163	CA Dept. of Parks and Recreation	Steelhead Trout (E), CA red-legged frog (T), Southwestern pond turtle (PT), Mountain lion (C), Two-stripe garter snake (S), Bobcat, Coyote, Deer, Gray fox

Map #	Case ID	Sub-category ¹	District	County-Route-PM	Location Name	Solution Type	CEHC ²	CDFW ³ Priority	Land Ownership	Species ⁴
18	201633	Fish	5	Santa Barbara – 101 – PM 46.95	Gaviota Creek Channel Restoration	Check Dam Drop Removal	Yes	W163	CA Dept. of Parks and Recreation	Steelhead Trout (E), CA red-legged frog (T), Southwestern pond turtle (PT), Mountain lion (C), Two-stripe garter snake (S), Bobcat, Coyote, Deer, Gray fox
19	201634	Fish	5	Santa Barbara – 101 – PM 47.12	Gaviota Creek Channel Restoration	Check Dam Drop Removal	Yes	W163	CA Dept. of Parks and Recreation	Steelhead Trout (E), CA red-legged frog (T), Southwestern pond turtle (PT), Mountain lion (C), Two-stripe garter snake (S), Bobcat, Coyote, Deer, Gray fox
20	201635	Fish	5	Santa Barbara – 101 – PM 47.15	Gaviota Creek Channel Restoration	Check Dam Drop Removal	Yes	W163	CA Dept. of Parks and Recreation	Steelhead Trout (E), CA red-legged frog (T), Southwestern pond turtle (PT), Mountain lion (C), Two-stripe garter snake (S), Bobcat, Coyote, Deer, Gray fox
21	201636	Fish	5	Santa Barbara – 101 – PM 47.19	Gaviota Creek Channel Restoration	Check Dam Drop Removal	Yes	W163	CA Dept. of Parks and Recreation	Steelhead Trout (E), CA red-legged frog (T), Southwestern pond turtle (PT), Mountain lion (C), Two-stripe garter snake (S), Bobcat, Coyote, Deer, Gray fox

Map #	Case ID	Sub-category ¹	District	County-Route-PM	Location Name	Solution Type	CEHC ²	CDFW ³ Priority	Land Ownership	Species ⁴
22	201532	Fish	5	Santa Barbara – 101 – PM R49.59	Gorgi Culvert	New Bridge	Yes	W163	Private	Steelhead Trout (E), CA red-legged frog (T), Southwestern pond turtle (PT), Mountain lion (C), Two-stripe garter snake (S), Bobcat, Coyote, Deer, Gray fox
23	20220522	Wildlife	5	Santa Cruz – 1 – PM R5.11	SCR – 1 Habitat Connectivity	New Culvert	No	W021	CA Fish and Wildlife, Private	Santa Cruz long-toed salamander (E), CA tiger salamander (T), CA red-legged frog (T), Bobcat, Coyote, Deer
24	202264	Fish	5	Santa Cruz – 9 – PM 19.2	San Lorenzo River (Waterman Gap)	New Bridge	Yes	No	CA Dept. of Parks and Recreation	Steelhead Trout (T), Coho Salmon (E) Foothill yellow-legged frog - central coast DPS (E), Southwestern pond turtle (PT), Mountain lion (C), California giant salamander (SC), Bobcat, Deer, Grey fox
<u>25</u> (SF)	<u>80000005</u>	<u>Wildlife</u>	<u>Z</u>	<u>Los Angeles – 5 – PM R46.59</u>	<u>I-5 HOV Lanes and Wildlife Corridor</u>	<u>New Bridge Overcrossing</u>	<u>Yes</u>	<u>W047</u>	<u>Private</u>	<u>Mountain lion (C), Coast horned lizard (SC), Bobcat, Coyote, Deer, Gray fox</u>
<u>26</u> (SF)	<u>80000006</u>	<u>Wildlife</u>	<u>Z</u>	<u>Los Angeles – 10 – PM 41.5</u>	<u>LA – 10 HOV</u>	<u>Upsize Culvert</u>	<u>No</u>	<u>No</u>	<u>Private</u>	<u>Coastal whiptail lizard, Bobcat, Coyote</u>

Map #	Case ID	Sub-category ¹	District	County-Route-PM	Location Name	Solution Type	CEHC ²	CDFW ³ Priority	Land Ownership	Species ⁴
<u>27</u> (SF)	<u>80000009</u>	<u>Wildlife</u>	<u>7</u>	<u>Los Angeles – 101 – 33.0</u>	<u>Wallis Annenberg (Liberty Canyon)</u>	<u>New Bridge Overcrossing</u>	<u>Yes</u>	<u>W042</u>	<u>Mountains Rec. and Cons., Santa Monica Mountains Cons.</u>	<u>Mountain lion (C), Bobcat, Coyote, Deer, Gray fox</u>
<u>28</u>	<u>800015</u>	<u>Fish</u>	<u>7</u>	<u>Ventura – 1 – 4.54</u>	<u>Big Sycamore Canyon</u>	<u>New Bridge</u>	<u>Yes</u>	<u>No</u>	<u>CA Dept. of Parks and Recreation</u>	<u>Steelhead Trout (E), Mountain lion (C), Southern California legless lizard (SC), Coastal whiptail (SC), Bobcat, Coyote, Deer, Grey fox</u>
<u>29</u> (SF)	<u>20230802</u>	<u>Wildlife</u>	<u>8</u>	<u>San Bernardino – 15 – PM 116.72</u>	<u>Cave Mountain</u>	<u>New Bridge Overcrossing</u>	<u>Yes</u>	<u>W166</u>	<u>US Bureau of Land Mgmt.</u>	<u>Mountain lion (C), Desert Bighorn Sheep (FP), Ringtail (FP), Badger (SC), Bobcat, Black-tailed jackrabbit, Coyote, Gray Fox, Kit fox</u>
<u>30</u> (SF)	<u>20230803</u>	<u>Wildlife</u>	<u>8</u>	<u>San Bernardino – 15 – PM 129.82</u>	<u>Soda Mountain</u>	<u>New Bridge Overcrossing</u>	<u>Yes</u>	<u>W166</u>	<u>US Nat. Park Service, US Bureau of Land Mgmt.</u>	<u>Mountain lion (C), Desert Bighorn Sheep (FP), Ringtail (FP), Badger (SC), Bobcat, Black-tailed jackrabbit, Coyote, Deer, Gray Fox, Kit fox</u>
<u>31</u> (SF)	<u>20230804</u>	<u>Wildlife</u>	<u>8</u>	<u>San Bernardino – 15 – PM 168.07</u>	<u>Clark Mountain</u>	<u>New Bridge Overcrossing</u>	<u>No</u>	<u>W166</u>	<u>US Bureau of Land Mgmt., CA State Lands Commission, US Nat. Park Service</u>	<u>Mountain lion (C), Desert Bighorn Sheep (FP), Badger (SC), Bobcat, Black-tailed jackrabbit, Coyote, Deer, Gray Fox, Kit fox</u>

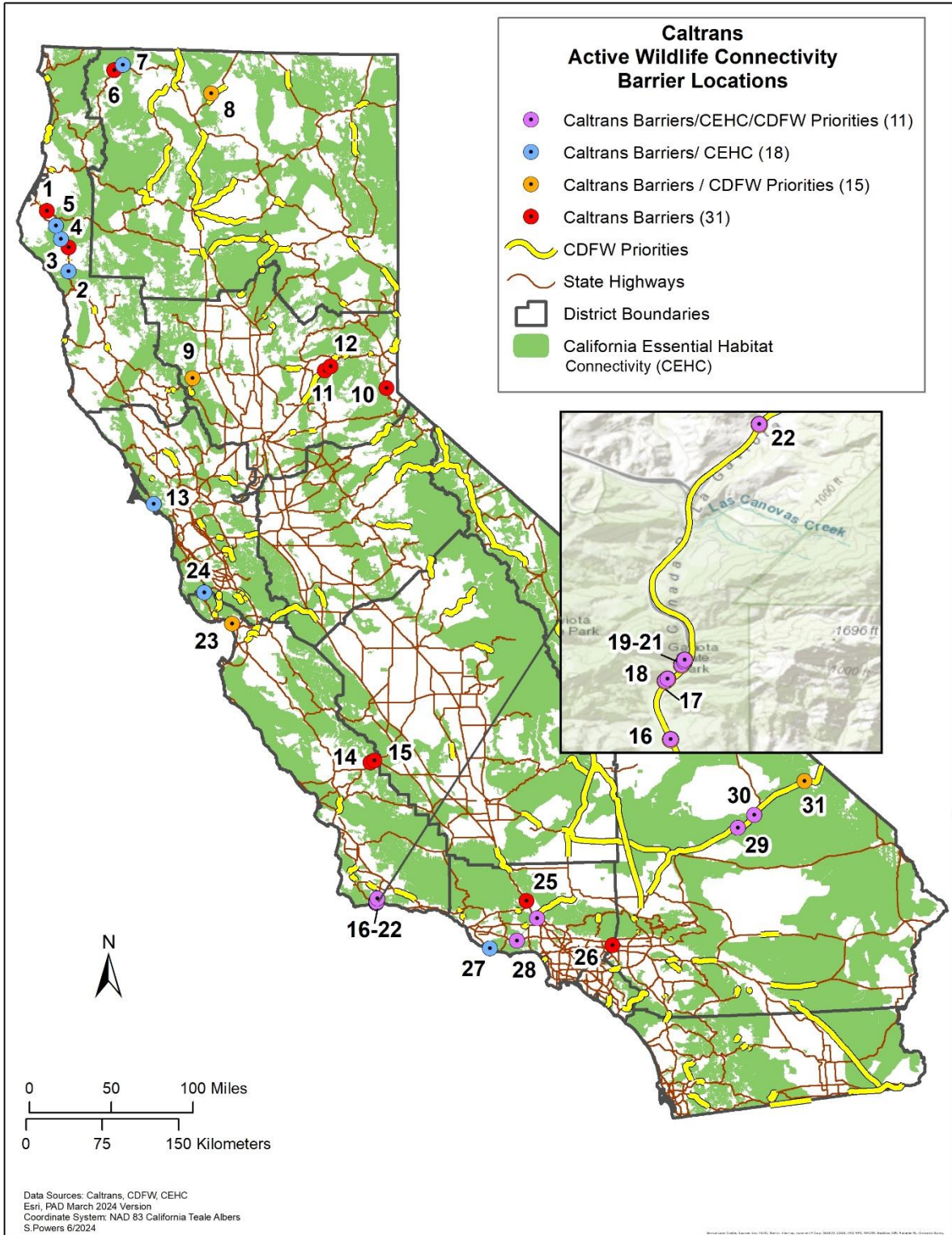


Figure 3. 2024 Active Wildlife Connectivity Remediation Locations

2024 Planned Funding – Wildlife Connectivity Locations

There are currently **37** planned funding fish and wildlife connectivity barrier locations in the early planning process, working toward completing Project Initiation Documents (PID), which serve to estimate the scope, schedule, and costs for site-specific fish and wildlife barrier remediation locations. Once wildlife connectivity remediation locations become targets in the SHSMP, it takes approximately two years to complete PID documents, and receive funding allocation approval from the California Transportation Commission. The planned funding locations listed are in various early and late stages of the planning process.

Of the **37** planned funding wildlife connectivity barrier locations, **19** are within areas identified by the California Essential Habitat Connectivity (CEHC), **22** locations are within CDFW priority route segments, and **29** locations are within protected or semi-protected lands owned and managed by the USFS, CDPR, US NPS, and others.

Table 2 below, lists planned funding locations for fish and wildlife connectivity barrier remediation locations that are Caltrans led capital projects, and special funded (SF) projects are underlined. Special funded projects are led and funded by other project sponsors, with varying levels of Caltrans oversight and funding. Figure 4 is a map of the locations listed in Table 2.

Table 2. 2024 Planned Funding – Wildlife Connectivity Locations

Map #	Case ID	Sub-category	District	County-Route-PM	Location Name	CEHC	CDFW Priority	Land Ownership	Species
1	201803	Fish	1	Humboldt – 36 – PM 5.18	Wilson Creek	No	No	Private	Steelhead Trout (T), Coho Salmon (T), Chinook Salmon (T), Northern Red-legged frog (SC), Foothill yellow-legged frog (SC), Black bear, Bobcat, Coyote, Deer, Grey fox, Mountain lion
2	201603	Fish	1	Humboldt – 36 – PM 9.17	Fox Creek	No	No	Private (Humboldt Redwood Company)	Steelhead Trout (T), Coho Salmon (T), Chinook Salmon (T), Northwestern pond turtle (PT), Foothill yellow-legged frog (SC), Black bear, Bobcat, Coyote, Deer, Grey fox, Mountain lion

Map #	Case ID	Sub-category	District	County-Route-PM	Location Name	CEHC	CDFW Priority	Land Ownership	Species
3	201805	Fish	1	Humboldt – 101 – PM 1.61	Durphy Creek	Yes	No	CA Dept. of Parks and Recreation	Steelhead Trout (T), Coho Salmon (T), Northwestern pond turtle (PT), Foothill yellow-legged frog (SC), Fisher (SC), Pacific marten, Black bear, Bobcat, Coyote, Deer, Grey fox, Mountain lion
<u>4 (SF)</u>	<u>80000010</u>	<u>Wildlife</u>	1	<u>Humboldt – 101 – PM 114.5</u>	<u>Stone Lagoon</u>	<u>No</u>	<u>W007</u>	<u>CA Dept. of Parks and Recreation / Private</u>	<u>Roosevelt Elk - Red School House herd (M), Northern Red-legged frog (SC), Black bear, Bobcat, Coyote, Deer, Gray fox, Mountain lion</u>
5	201304/ 80000011	Fish/ Wildlife	1	Humboldt – 299 – PM R2.97	Essex Gulch	No	W085	Private	Steelhead Trout (T), Coho Salmon (T), Chinook Salmon (T), Ringtail (FP), Fisher (SC), Pacific marten, Northern red-legged frog (SC), Foothill yellow-legged frog (SC), Southern torrent salamander (SC), Roosevelt elk (M), Del Norte salamander, Black bear, Bobcat, Coyote, Deer, Mountain lion, River otter
6	201608	Fish	1	Mendocino – 1 – PM 88.71	Powderhouse Gulch	No	No	Private / Mendocino Redwood Company	Steelhead Trout (T), Coho Salmon (E), Chinook Salmon (T), Fisher (SC), Pacific -tailed frog (SC), Pacific marten, Black bear, Bobcat, Coyote, Deer, Grey fox, Mountain lion
7	202217	Fish	1	Mendocino – 101 – PM 80.75	Twin Rocks Creek	No	No	Private	Steelhead Trout (T), Coho Salmon (T), Chinook Salmon (T), Fisher (SC), Foothill yellow-legged frog (SC), Pacific marten, Black bear, Bobcat, Coyote, Deer, Grey fox, Mountain lion

Map #	Case ID	Sub-category	District	County-Route-PM	Location Name	CEHC	CDFW Priority	Land Ownership	Species
8	202218	Fish	1	Mendocino – 101 – PM 81.17	Cummings Creek	No	No	Private / US Bureau of Land Mgmt.	Steelhead Trout (T), Coho Salmon (T), Chinook Salmon (T), Pacific Marten, Coastal Distinct Population Segment (E), Fisher (SC), Foothill yellow-legged frog (SC), Black bear, Bobcat, Coyote, Deer, Grey fox, Mountain lion
9	201617	Fish	2	Trinity – 3 – PM 32.62	East Weaver Creek	No	No	Private	Steelhead Trout (T), Coho Salmon (T), Chinook Salmon (T), Pacific -tailed frog (SC), Foothill yellow-legged frog (SC), Black bear, Bobcat, Coyote, Deer, Pacific Fisher, Mountain lion
10	201419	Fish	2	Trinity – 299 – PM 49.63	West Weaver Creek	No	W068	US Forest Service	Steelhead Trout (T), Coho Salmon (T), Chinook Salmon (T), Foothill yellow-legged frog (SC), Black bear, Bobcat, Coyote, Deer, Pacific Fisher, Mountain lion
11	20220307	Wildlife	3	Nevada – 89 – PM 5.78	Hobart Mills	No	No	US Forest Service	Gray wolf (E), Deer - Loyalton-Truckee herd (M), Black bear, Bobcat, Coyote, Mountain lion
12	201424/ 201425	Fish	4	Marin – 1 – PM 18.69	McCurdy Creek/North Fork McCurdy Creek	Yes	No	US National Park Service	Steelhead Trout (T), Coho Salmon (E), CA Red-legged frog (E), California giant salamander (SC), Black bear, Bobcat, Coyote, Deer, Grey fox
13	201422	Fish	4	Marin – 1 – PM 22.67	John West Fork	Yes	No	US National Park Service	Steelhead Trout (T), Coho Salmon (E), CA Red-legged frog (E), California giant salamander (SC), Black bear, Bobcat, Coyote, Deer, Grey fox
<u>14</u> (SF)	<u>80000012</u>	<u>Wildlife</u>	4	<u>Santa Clara – 17 – PM 4.8</u>	<u>Highway 17 Underpass</u>	<u>Yes</u>	<u>W023</u>	<u>Santa Clara Valley Water District</u>	<u>Foothill yellow-legged frog (E), CA red-legged frog (T), Mountain lion (C), Bobcat, Coyote, Deer, Gray fox</u>

Map #	Case ID	Sub-category	District	County-Route-PM	Location Name	CEHC	CDFW Priority	Land Ownership	Species
15	20220415	Wildlife	4	Santa Clara – 152 – PM R25.36	Killdeer Creek	Yes	W030	Private	San Joaquin kit fox (E), CA red-legged frog (T), CA tiger salamander (T), Mountain lion (C), Bobcat, Coyote, Deer
16	202245	Fish	4	Sonoma – 1 – PM 32.45	Fort Ross Creek	Yes	No	CA Dept. of Parks and Recreation	Steelhead Trout (T), Coho Salmon (E), Chinook Salmon (T), CA Red-legged frog (E), Foothill yellow-legged frog(S), Sonoma tree vole (S), California giant salamander (S), Black bear, Bobcat, Coyote, Deer, Grey fox, Mountain lion
17	202247	Fish	4	Sonoma – 1 – PM 41.0	Miller Creek	No	No	CA Dept. of Parks and Recreation	Steelhead Trout (T), Coho Salmon (E), Chinook Salmon (T), CA Red-legged frog (E), Foothill yellow-legged frog(S), Sonoma tree vole (S), California giant salamander (S), Black bear, Bobcat, Coyote, Deer, Grey fox, Mountain lion
18	80000013	Wildlife	5	Monterey – 68 – PM 12.0	Hwy 68 Operational Improvements	Yes	No	US Bureau of Land Mgmt. / Private	CA tiger salamander - central California DPS (T), Badger (SC), Bobcat, Coyote, Deer, Gray Fox
19	20220518	Wildlife	5	San Benito – 101 – PM R0.49	Aromas Hills 1	No	W041	Land Trust of Santa Cruz County / Private	CA tiger salamander (T), CA red-legged frog (T), Mountain lion (C), Bobcat, Coyote, Deer
20	20220519	Wildlife	5	San Benito – 101 – PM 1.57	Aromas Hills 2	No	W041	Land Trust of Santa Cruz County / Private	CA tiger salamander (T), CA red-legged frog (T), Mountain lion (C), Bobcat, Coyote, Deer, Gray fox

Map #	Case ID	Sub-category	District	County-Route-PM	Location Name	CEHC	CDFW Priority	Land Ownership	Species
21	202252	Fish	5	Santa Barbara – 101 – PM 47.37	Gaviota Channel Restoration	Yes	W163	CA Dept. of Parks and Recreation	Steelhead Trout (E), CA red-legged frog (T), Southwestern pond turtle (PT), Mountain lion (C), Two-stripe garter snake (S), Bobcat, Coyote, Deer, Gray fox
22	202253	Fish	5	Santa Barbara – 101 – PM 47.41	Gaviota Channel Restoration	Yes	W163	CA Dept. of Parks and Recreation	Steelhead Trout (E), CA red-legged frog (T), Southwestern pond turtle (PT), Mountain lion (C), Two-stripe garter snake (S), Bobcat, Coyote, Deer, Gray fox
23	202254	Fish	5	Santa Barbara – 101 – PM 47.69	Gaviota Channel Restoration	Yes	W163	CA Dept. of Parks and Recreation	Steelhead Trout (E), CA red-legged frog (T), Southwestern pond turtle (PT), Mountain lion (C), Two-stripe garter snake (S), Bobcat, Coyote, Deer, Gray fox
24	202255	Fish	5	Santa Barbara – 101 – PM 47.75	Gaviota Channel Restoration	Yes	W163	CA Dept. of Parks and Recreation	Steelhead Trout (E), CA red-legged frog (T), Southwestern pond turtle (PT), Mountain lion (C), Two-stripe garter snake (S), Bobcat, Coyote, Deer, Gray fox
25	202256	Fish	5	Santa Barbara – 101 – PM 47.77	Gaviota Channel Restoration	Yes	W163	CA Dept. of Parks and Recreation	Steelhead Trout (E), CA red-legged frog (T), Southwestern pond turtle (PT), Mountain lion (C), Two-stripe garter snake (S), Bobcat, Coyote, Deer, Gray fox
26	202257	Fish	5	Santa Barbara – 101 – PM 47.81	Gaviota Channel Restoration	Yes	W163	CA Dept. of Parks and Recreation	Steelhead Trout (E), CA red-legged frog (T), Southwestern pond turtle (PT), Mountain lion (C), Two-stripe garter snake (S), Bobcat, Coyote, Deer, Gray fox

Map #	Case ID	Sub-category	District	County-Route-PM	Location Name	CEHC	CDFW Priority	Land Ownership	Species
27	202258	Fish	5	Santa Barbara – 101 – PM 48.53	Las Canovas Creek	Yes	W163	CA Dept. of Parks and Recreation	Steelhead Trout (E), CA red-legged frog (T), Southwestern pond turtle (PT), Mountain lion (C), Two-stripe garter snake (S), Bobcat, Coyote, Deer, Gray fox
28	201542	Fish	7	Ventura – 33 – PM 34.5	Burro Creek	Yes	No	US Forest Service	Steelhead Trout (E), Southwestern pond turtle (PT), Mountain lion (C), Bobcat, Coyote, Deer
<u>29 (SF)</u>	<u>80000014</u>	<u>Wildlife</u>	<u>8</u>	<u>Riverside – 15 – PM 1.67</u>	<u>Rainbow Canyon</u>	<u>Yes</u>	<u>W046</u>	<u>US Bureau of Land Mgmt. / Private</u>	<u>Western spadefoot (PT), Mountain lion (C), Red-diamond rattlesnake, Bobcat, Coyote, Deer, Gray Fox</u>
<u>30 (SF)</u>	<u>20220829</u>	<u>Wildlife</u>	<u>8</u>	<u>Riverside – 91 – PM R0.34</u>	<u>B Canyon</u>	<u>No</u>	<u>W052</u>	<u>Orange County Flood Control District / Private</u>	<u>Mountain lion (C), Bobcat, Coyote, Deer, Gray Fox</u>
<u>31 (SF)</u>	<u>80000015</u>	<u>Wildlife</u>	<u>9</u>	<u>Mono – 203 – PM R7.67</u>	<u>Mammoth Complex</u>	<u>No</u>	<u>W141</u>	<u>US Forest Service</u>	<u>Deer - Casa Diablo herd (M), Black bear, Bobcat, Coyote, Mountain lion</u>
<u>32 (SF)</u>	<u>80000016</u>	<u>Wildlife</u>	<u>9</u>	<u>Mono – 395 – PM 19.67</u>	<u>McGee Curve</u>	<u>Yes</u>	<u>W054</u>	<u>City of Los Angeles Water and Power / US Bureau of Land Mgmt.</u>	<u>Deer - Casa Diablo herd(M), Black bear, Bobcat, Coyote, Mountain lion</u>
<u>33 (SF)</u>	<u>20220945</u>	<u>Wildlife</u>	<u>9</u>	<u>Mono – 395 – PM 20.26</u>	<u>Convict Creek</u>	<u>Yes</u>	<u>W054</u>	<u>City of Los Angeles Water and Power / US Bureau of Land Mgmt.</u>	<u>Deer - Casa Diablo herd (M), Black bear, Bobcat, Coyote, Mountain lion</u>

Map #	Case ID	Sub-category	District	County-Route-PM	Location Name	CEHC	CDFW Priority	Land Ownership	Species
<u>34</u> (SF)	<u>80000017</u>	<u>Wildlife</u>	<u>9</u>	<u>Mono – 395 – PM 23.34</u>	<u>Hot Creek Road</u>	<u>No</u>	<u>W054</u>	<u>US Forest Service</u>	<u>Deer - Casa Diablo herd (M), Black bear, Bobcat, Coyote, Mountain lion</u>
<u>35</u> (SF)	<u>80000018</u>	<u>Wildlife</u>	<u>9</u>	<u>Mono – 395 – PM R26.07</u>	<u>Mammoth Creek</u>	<u>No</u>	<u>W054</u>	<u>US Forest Service / City of Los Angeles Water and Power</u>	<u>Deer - Casa Diablo herd (M), Black bear, Bobcat, Coyote, Mountain lion</u>
<u>36</u> (SF)	<u>80000019</u>	<u>Wildlife</u>	<u>9</u>	<u>Mono – 395 – PM R26.33</u>	<u>The Trees</u>	<u>No</u>	<u>W054</u>	<u>US Forest Service / City of Los Angeles Water and Power</u>	<u>Deer - Casa Diablo herd (M), Black bear, Bobcat, Coyote, Mountain lion</u>
37	201760	Fish	10	Stanislaus – 120 – PM R15.04	Wildcat Creek	Yes	No	Private	Steelhead Trout (T), Chinook Salmon (T), Southwestern pond turtle (PT), Bobcat, Coyote, Deer, Gray fox

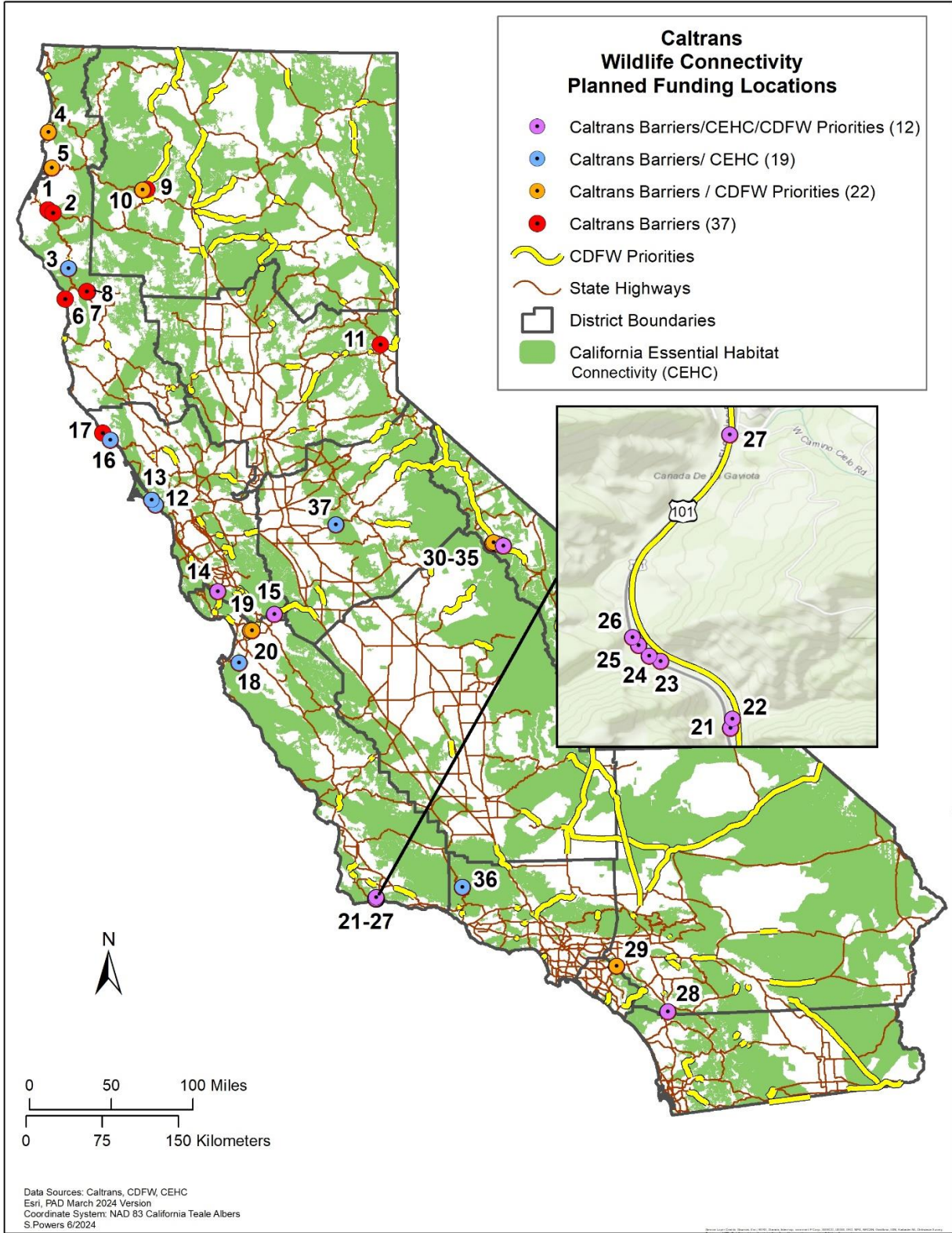


Figure 4. 2024 Planned Funding – Wildlife Connectivity Locations

2024 Priority Wildlife Connectivity Locations Requiring Funding

There are currently **76** priority wildlife connectivity barrier locations requiring funding, which have been identified by Caltrans districts, as well as CDFW, and other state, federal, and local partners. Of the **76** Priority wildlife connectivity barrier locations that require funding, **42** are within areas identified by the California Essential Habitat Connectivity (CEHC), **42** locations are within CDFW priority route segments, and **43** locations are within protected or semi-protected lands owned and managed by the USFS, CDPR, US NPS, and others.

Table 3 below, lists the **76** Caltrans priority wildlife connectivity barrier remediation locations, which have been identified for threatened and endangered species and animal/vehicle hotspot areas. Figure 5 is a map of the locations listed in Table 3.

Table 3. 2024 Priority Wildlife Connectivity Locations Requiring Funding

Map #	Case ID	Sub-category	District	County-Route-PM	Location Name	CEHC	CDFW Priority	Ownership	Species
1	20220101	Wildlife	1	Humboldt – 101 – PM 62.23	Palmer Creek	No	No	Private	Ringtail (FP), Black bear, Bobcat, Coyote, Deer, Gray fox, Mountain lion
2	20220102	Wildlife	1	Humboldt – 101 – PM R126.22	May Creek – Redwood National Park	Yes	No	US National Park Service (Redwood)	Humboldt marten (E), Roosevelt Elk (M), Black bear, Bobcat, Coyote, Deer, Mountain lion
3	20240102	Wildlife	1	Humboldt – 299 – PM 31.07	Willow Creek	Yes	No	Private	Humboldt marten (E), Ringtail (FP), Fisher (SC), Coastal tailed frog (SC), Northern red-legged frog (SC), Foothill yellow-legged frog (SC), Southern torrent salamander (SC), Black bear, Bobcat, Coyote, Deer, Mountain lion, River otter

Map #	Case ID	Sub-category	District	County-Route-PM	Location Name	CEHC	CDFW Priority	Ownership	Species
4	20240103	Wildlife	1	Mendocino – 1 – PM 17.67	Gasker Slough, Hathaway Creek	No	No	US Bureau of Land Management / Private	Point Arena mountain beaver (E), Steelhead trout (E), CA red-legged frog (T), Coho salmon (T), Northwestern pond turtle (P), Black bear, Bobcat, Deer, Mountain lion
5	20220103	Wildlife	1	Mendocino – 1 – PM 180.5	Big Navarro, Garcia	No	No	Private	Point Arena mountain beaver (E), CA red-legged frog (T), Black bear, Bobcat, Coyote, Deer, Mountain lion
6	20240205	Wildlife	2	Lassen – 395- PM 12.35	Red Rock, Long Valley Creek	No	No	CA State Lands Commission / Private	Gray wolf (E), Badger (SC), Deer - Doyle herd (M), Bobcat, Coyote, Mountain lion
7	20240204	Wildlife	2	Lassen – 395 – PM 13.12	Upper Long Valley Creek	No	No	CA State Lands Commission	Gray wolf (E), Badger (SC), Deer - Doyle herd (M), Bobcat, Coyote, Mountain lion
8	20240206	Wildlife	2	Lassen – 395 – PM 14.25	Red Rock Canyon	No	W002	US Bureau of Land Management	Gray wolf (E), Badger (SC), Deer - Doyle herd (M), Bobcat, Coyote, Mountain lion
9	20240207	Wildlife	2	Lassen – 395 – PM 23.25	Robinson Canyon	No	W002	Private	Gray wolf (E), Badger (SC), Deer - Doyle herd (M), Bobcat, Coyote, Gray fox, Mountain lion
10	20240208	Wildlife	2	Lassen – 395 – PM 28.00	Chimney Canyon – Long Valley Creek	Yes	W002	CA Department of Fish and Wildlife	Gray wolf (E), Badger (SC), Deer - Doyle herd (M), Bobcat, Coyote, Gray fox, Mountain lion

Map #	Case ID	Sub-category	District	County-Route-PM	Location Name	CEHC	CDFW Priority	Ownership	Species
11	20240209	Wildlife	2	Siskiyou – 5 – PM 68.62	Hilt	No	W005	Private	Gray wolf (E), Roosevelt elk - Hilt herd (M), Black bear, Bobcat, Coyote, Mountain lion, Deer
12	20240310	Wildlife	3	Butte – 32 – PM 21.70	Big Chico Creek Reserve	Yes	No	CA State University at Chico Research Foundation / Private	Ringtail (FP), Black bear, Bobcat, Coyote, Deer, Fisher, Gray fox, Marten, Mountain lion
13	20240311	Wildlife	3	El Dorado – 89 – PM 2.86	Grass Lake Creek	Yes	No	US Forest Service	Sierra Nevada red fox (E), Sierra Nevada yellow-legged frog (E), Foothill yellow-legged frog (E), Gray wolf (E), Wolverine (T), Badger (SC), Black bear, Bobcat, Deer Fisher, Marten, Mountain lion
14	20220308	Wildlife	3	Nevada – 89 – PM 7.78	Sagehen Creek	No	No	US Forest Service	Sierra Nevada yellow-legged frog (E), Lahonton cutthroat trout (T), Deer - Loyaltton-Truckee herd (M), Black bear, Bobcat, Coyote, Gray fox
15	20220309	Wildlife	3	Placer - 80 – PM EB67.25	Rainbow Troy EB	Yes	No	Private	Gray wolf (E), Deer - Loyaltton-Truckee herd(M), Black bear, Bobcat, Coyote, Marten
16	20220311	Wildlife	3	Placer – 80 – PM WB67.24	Rainbow Troy WB	Yes	No	Private	Gray wolf (E), Deer - Loyaltton-Truckee herd(M), Black bear, Bobcat, Coyote, Marten
17	20220410	Wildlife	4	Alameda – 680 – PM R9.0	Sonol Grade	Yes	W028	Private	Alameda whipsnake (T), CA red-legged frog (T), CA tiger salamander (T), Mountain lion (C), Bobcat, Coyote, Deer, Gray fox

Map #	Case ID	Sub-category	District	County-Route-PM	Location Name	CEHC	CDFW Priority	Ownership	Species
18	20240412	Wildlife	4	San Mateo – 84 – PM 10.50	Woodcuff Creek	Yes	No	Midpeninsula Regional Open Space District / Private	San Francisco garter snake (E), CA red-legged frog (T), Mountain lion (C), Badger (SC), Bobcat, Coyote, Deer
19	20240413	Wildlife	4	San Mateo – 84 – PM 12.06	San Gregorio Creek	Yes	No	Private	San Francisco garter snake (E), CA red-legged frog (T), Mountain lion (C), Badger (SC), Bobcat, Coyote, Deer, Long-tailed weasel
20	20220412	Wildlife	4	Santa Clara – 17 – PM 3.45	Los Gatos Creek 1	Yes	W023	Midpeninsula Regional Open Space District / Private	Foothill yellow-legged frog (E), CA red-legged frog (T), Mountain lion (C), Bobcat, Coyote, Deer, Gray fox
21	20220113	Wildlife	4	Santa Clara – 17 – PM 5.1	Los Gatos Creek 2	Yes	No	Santa Clara Valley Water District, San Jose Water Works / Midpeninsula Regional Open Space District	Foothill yellow-legged frog (E), CA red-legged frog (T), Mountain lion (C), Bobcat, Coyote, Deer, Gray fox
22	20240414	Wildlife	4	Santa Clara – 101 – PM R23.2	Coyote Valley	Yes	W022	Santa Clara Valley Transportation Authority / Santa Clara County Parks and Recreation, Private	CA red-legged frog (T), CA tiger salamander (T), Mountain lion (C), Southwestern pond turtle (P), Bobcat, Coyote, Deer, Gray fox
23	202204116	Wildlife	4	Santa Clara – 152 – PM R27.24	Pacheco Pass	Yes	W030	Santa Clara Valley Habitat Agency / Private	San Joaquin kit fox (E), CA red- legged frog (T), CA tiger salamander (T), Mountain lion (C), Bobcat, Coyote, Deer, Gray fox

Map #	Case ID	Sub-category	District	County-Route-PM	Location Name	CEHC	CDFW Priority	Ownership	Species
24	20220417	Wildlife	4	Sonoma – 12 – PM 32.0	South Butler Creek	Yes	W026	State of California, Sonoma County Regional Parks / Private	CA red-legged frog (T), Black bear, Bobcat, Coyote, Deer, Gray fox, Mountain lion, River otter
25	20240615	Wildlife	5	San Luis Obispo – 1 – PM 21.94	Dairy Creek	Yes	No	Department of Defense / County of San Luis Obispo	Foothill yellow-legged frog (E), CA red-legged frog (T), Mountain lion (C), Southwestern pond turtle (P), Bobcat, Coyote, Deer
26	20240516	Wildlife	5	San Luis Obispo – 41 – PM 45.53	Cholame Valley	No	No	Private	San Joaquin kit fox (E), CA red-legged frog (T), Mountain lion (C), Western spadefoot (P), Antelope, Bobcat, Coyote, Deer
27	20240517	Wildlife	5	San Luis Obispo – 41 – PM 47.90	SLO – Kern line 1	No	No	Private	San Joaquin kit fox (E), CA red-legged frog (T), Mountain lion (C), Antelope, Bobcat, Coyote, Deer
28	20240518	Wildlife	5	San Luis Obispo – 41 – PM 49.19	SLO – Kern line 2	No	No	Private	San Joaquin kit fox (E), CA red-legged frog (T), Mountain lion (C), Western spadefoot (P), Antelope, Bobcat, Coyote, Deer
29	20240519	Wildlife	5	San Luis Obispo – 46 – PM 54.77	Cholame Creek	No	W102	Private	San Joaquin kit fox (E), CA red-legged frog (T), Mountain lion (C), Western spadefoot (P), Southwestern pond turtle (P), Bobcat, Coyote, Deer
30	20220520	Wildlife	5	Santa Barbara – 101 – PM 47.91	Gaviota Pass 1	Yes	W163	California Department of Parks and Recreation	CA red-legged frog (T), Mountain lion (C), Badger (SC), Bobcat, Coyote, Deer

Map #	Case ID	Sub-category	District	County-Route-PM	Location Name	CEHC	CDFW Priority	Ownership	Species
31	20220523	Wildlife	5	Santa Barbara – 101 – PM 48.09	Gaviota Pass 2	Yes	W163	California Department of Parks and Recreation	CA red-legged frog (T), Mountain lion (C), Badger (SC), Bobcat, Coyote, Deer
32	20220521	Wildlife	5	Santa Cruz – 1 – PM R6.88	Larkin Valley	No	W021	Private	Santa Cruz long-toed salamander (E), CA tiger salamander (T), CA red-legged frog (T), Bobcat, Coyote, Deer
33	20220624	Wildlife	6	Fresno – 168 – PM 41.33	Shaver Lake	No	W101	Private	Fisher - S. Sierra Nevada (E), Foothill yellow-legged frog (E), Sierra Nevada red fox (E), Sierra Nevada yellow-legged frog (E), Wolverine (T), Deer - Upper San Joaquin River Watershed herd) (M), Black bear, Bobcat, Coyote
34	20240620	Wildlife	6	Fresno – 168 – PM 52.31	Tributary to Stevenson Creek	No	W101	US Forest Service / Private	Fisher - S. Sierra Nevada (E), Sierra Nevada red fox (E), Foothill yellow-legged frog (E), Sierra Nevada yellow legged frog (E), Northwestern pond turtle (P), Black bear, Bobcat, Coyote
35	20240621	Wildlife	6	Fresno – 168 – PM 57.07	Huntington Lake	No	W101	US Forest Service	Sierra Nevada red fox (E), Fisher - S. Sierra Nevada (E), Foothill yellow-legged frog (E), Sierra Nevada yellow-legged frog (E), Yosemite Toad (T), Northwestern pond turtle (P), Black bear, Bobcat, Coyote

Map #	Case ID	Sub-category	District	County-Route-PM	Location Name	CEHC	CDFW Priority	Ownership	Species
36	20240722	Wildlife	7	Los Angeles – 14 – PM 39.82	Agua Dulce	Yes	W164	Santa Clarita Watershed Recreation and Conservation Authority / Mountains Recreation and Conservation Authority	Arroyo toad (E), Santa Ana sucker (T), Mountain lion (C), Southwestern pond turtle (P), Western spadefoot (P), CA legless lizard (SC), Two-striped garter snake (SC), Coast horned lizard (SC) Badger (SC), Bobcat, Coyote, Deer
37	20220725	Wildlife	7	Los Angeles – 118 – PM R0.71	Santa Susana Pass	No	W103	Mountains Recreation and Conservation Authority / Private	Mountain lion (C), Deer, Bobcat, Coyote, Deer
38	20220726	Wildlife	7	Ventura – 101 – PM 10.3	Conejo Grade	No	No	Private	Mountain lion (C), Deer, Bobcat, Coyote, Deer, Gray Fox
39	20220727	Wildlife	7	Ventura – 126 – PM 24.93	East Cavin	Yes	No	Private	Mountain lion (C), Bobcat, Coyote, Deer, Gray Fox
40	20240823	Wildlife	8	Riverside – 10 – PM R15.79	Itta Wash	No	W057/ W058	Bureau of Indian Affairs	San Joaquin Kit fox (E), Mountain lion (C), Badger (SC), Coast horned lizard (SC), Bobcat, Coyote, Deer
41	20220828	Wildlife	8	Riverside – 62 – PM R6.9	Lower Morongo Wash	Yes	No	Coachella Valley Mountains Conservancy / United States Bureau of Land Management	Desert Tortoise (T), Mountain lion (C), Desert bighorn sheep (FP), Bobcat, Coyote, Deer, Gray Fox

Map #	Case ID	Sub-category	District	County-Route-PM	Location Name	CEHC	CDFW Priority	Ownership	Species
42	20220830	Wildlife	8	San Bernardino – 15 – PM 15.85	Cajon Wash 1	Yes	No	County of San Bernardino / Private	Mountain lion (C), Ringtail (FP), Bobcat, Coyote, Deer, Gray Fox
43	20220831	Wildlife	8	San Bernardino – 15 – PM	Cajon Wash 2	Yes	No	US Forest Service	Mountain lion (C), Bobcat, Coyote, Deer, Gray Fox
44	20220832	Wildlife	8	San Bernardino – 15 – PM	Cajon Wash 3	Yes	W060	US Forest Service	Mountain lion (C), Bobcat, Coyote, Deer, Gray Fox
45	20220833	Wildlife	8	San Bernardino – 15 – PM	Cajon Wash 4	Yes	W060	US Forest Service	Mountain lion (C), Bobcat, Coyote, Deer, Gray Fox
45	20220834	Wildlife	8	San Bernardino – 62 – PM 2.32	Yucca Grade 1	No	No	Private	Desert Tortoise (T), Mountain lion (C), Badger (SC), Coast horned lizard (SC), Black -tailed jackrabbit, Bobcat, Coyote, Deer, Gray fox
47	20220834	Wildlife	8	San Bernardino – 62 – PM 5.55	Little Morongo Creek	No	No	Private	Desert Tortoise (T), Mountain lion (C), Badger (SC), Coast horned lizard (SC), Black-tailed jackrabbit, Bobcat, Coyote, Deer, Gray fox
48	20220836	Wildlife	8	San Bernardino – 62 – PM 7.27	Yucca Grade 2	Yes	No	Mojave Desert Land Trust / Private	Desert Tortoise (T), Mountain lion (C), Badger (SC), Coast horned lizard (SC), Black-tailed jackrabbit, Bobcat, Coyote, Deer, Gray fox
49	202409204	Wildlife	9	Kern – 58 – PM 77.91	Fox Lane	Yes	W033	Private	San Joaquin Kit fox (E), Mountain lion (C), Badger (SC), Coast horned lizard (SC), Bobcat, Coyote, Deer

Map #	Case ID	Sub-category	District	County-Route-PM	Location Name	CEHC	CDFW Priority	Ownership	Species
50	20220937	Wildlife	9	Kern – 58 – PM 79.4	Hart Flat 1	Yes	W033	Private	Mountain lion (C), California legless lizard (SC), Coast horned lizard (SC), Bobcat, Coyote, Deer
51	20220938	Wildlife	9	Kern – 58 – PM 80.2	Hart Flat 2	Yes	W033	Private	Mountain lion (C), California legless lizard (SC), Coast horned lizard (SC), Bobcat, Coyote, Deer
52	20240925	Wildlife	9	Kern – 58 – PM 84.08	Tehachapi 1	No	W033	Private	Badger (SC), Black bear, Bobcat, Coyote, Deer, Gray fox, Kangaroo rat, Long-tailed weasel, Raccoon
53	20240926	Wildlife	9	Kern – 58 – PM 85.33	Draw to Tehachapi Creek	No	W033	Private	Badger (SC), Black bear, Bobcat, Coyote, Deer, Gray fox, Kangaroo rat, Long-tailed weasel, Raccoon
54	20220939	Wildlife	9	Kern – 58 – Pm 85.73	Broome Tehachapi	No	W033	Private	Badger (SC), Black bear, Bobcat, Coyote, Deer, Gray fox, Kangaroo rat, Long-tailed weasel, Raccoon
55	20240927	Wildlife	9	Kern – 58 – PM 86.254	Tehachapi 2	No	W033	Private	Mountain lion (C), Black bear, Bobcat, Coyote, Deer, Gray fox
56	20240928	Wildlife	9	Mono – 395 – PM R11.09	Crooked Creek	No	W141	US Forest Service / City of Los Angeles Department of Water and Power	Fisher - S. Sierra Nevada (E), Sierra Nevada Bighorn Sheep (E), Sierra Nevada Red fox (E), Sierra Nevada Yellow-legged frog (E), Yosemite toad (T), Mountain lion (C), Black bear, Bobcat, Coyote, Deer

Map #	Case ID	Sub-category	District	County-Route-PM	Location Name	CEHC	CDFW Priority	Ownership	Species
57	20241029	Wildlife	10	Alpine – 4 – PM 1.61	Bear Creek	No	W019	US Forest Service	Sierra Nevada red fox (E), Sierra Nevada yellow-legged frog (E), Fisher - S. Sierra Nevada (E), Southern long-toed salamander (SC), Black bear, Bobcat, Coyote, Deer
58	20241030	Wildlife	10	Calaveras – 4 – PM 50.21	Mill Creek	Yes	W093	Private (Sierra Pacific Industries)	Sierra Nevada yellow-legged frog (E), Foothill yellow-legged frog (E), Southern long-toed salamander (SC), Black bear, Bobcat, Coyote, Deer
59	20241032	Wildlife	10	Calaveras – 4 – PM 51.85	Cottage Springs	Yes	W093	Private (Sierra Pacific Industries)	Fisher - S. Sierra Nevada (E), Sierra Nevada red fox (E), Sierra Nevada yellow-legged frog (E), Black bear, Bobcat, Coyote, Deer
60	20241032	Wildlife	10	Calaveras – 4 – PM 60.88	Meadow Creek	Yes	W093	US Forest Service	Fisher - S. Sierra Nevada (E), Sierra Nevada red fox (E), Sierra Nevada yellow-legged frog (E), Black bear, Bobcat, Coyote, Deer
61	20241033	Wildlife	10	Mariposa – 49 – PM 6.20	De Long Creek	No	No	Private	Fisher - S. Sierra Nevada (E), Foothill yellow-legged frog (E), Sierra Nevada yellow-legged frog (E), CA tiger salamander (T), Yosemite toad (T), Northwestern pond turtle (P), Badger (SC), Black Bear, Bobcat, Coyote, Deer, Mountain lion

Map #	Case ID	Sub-category	District	County-Route-PM	Location Name	CEHC	CDFW Priority	Ownership	Species
62	20221040	Wildlife	10	Mariposa – 49 – PM 12.21	Bootjack	No	No	Private	Fisher-Southern Sierra Nevada (E), CA red-legged frog (T), Tule Elk - San Luis reservoir herd (M), Black Bear, Bobcat, Coyote, Deer, Gray Fox, Mountain lion
63	20241034	Wildlife	10	Mariposa – 132 – PM 9.56	Piney Creek	No	No	Private	Foothill yellow-legged frog (E), Northwestern pond turtle (P), American badger (SC), Bobcat, Coyote, Deer, Gray Fox
64	20221041	Wildlife	10	Merced – 152 – R2.7	Pacheco Pass	Yes	W030	CA Fish and Wildlife / US Bureau of Reclamation	CA red-legged frog (T), Tule elk - San Luis reservoir herd (M)
65	20241035	Wildlife	10	Merced – 152 – PM 3.05	Cottonwood Creek	Yes	W030	CA Fish and Wildlife / US Bureau of Reclamation	San Joaquin kit fox (E), Foothill yellow-legged frog (E), Blunt-nosed leopard lizard (E), CA tiger salamander (T), CA red-legged frog (T), Mountain lion (C), Western spadefoot (P), Northwestern pond turtle (P), Badger (SC), Tule elk - San Luis reservoir herd (M), Bobcat, Coyote, Deer

Map #	Case ID	Sub-category	District	County-Route-PM	Location Name	CEHC	CDFW Priority	Ownership	Species
66	20241035	Wildlife	10	Merced – 152 – PM 9.27	Sisk Flat (San Luis Reservoir)	Yes	W030	US Bureau of Reclamation	San Joaquin kit fox (E), Foothill yellow-legged frog (E), Blunt-nosed leopard lizard (E), CA tiger salamander (T), CA red-legged frog (T), Mountain lion (C), Western spadefoot (P), Northwestern pond turtle (P), Badger (SC), Tule elk - San Luis reservoir herd (M), Bobcat, Coyote, Deer
67	20241137	Wildlife	11	San Diego – 67 – PM 12.25	San Vicente Creek	Yes	W044	Private	Arroyo toad (E), Stephen's kangaroo rat (T), Mountain lion (C), Bobcat, Coyote, Deer
68	20241138	Wildlife	11	San Diego – 67 – PM 13.75	Sycamore Creek	Yes	W044	Private	Arroyo toad (E), Stephen's kangaroo rat (T), Mountain lion (C), Bobcat, Coyote, Deer
69	20241139	Wildlife	11	San Diego – 76 – PM 45.45	Wigham Creek	Yes	No	US Forest Service / Private	Mountain lion (C), Bobcat, Coyote, Deer
70	20241140	Wildlife	11	San Diego – 76 – PM 46.45	San Luis Rey River	Yes	No	US Forest Service	Mountain lion (C), Bobcat, Coyote, Deer
71	20241141	Wildlife	11	San Diego – 78 – PM 53.04	San Diego River	No	No	County of San Diego / Private	Mountain lion (C), Western spadefoot (P), Bobcat, Coyote, Deer

Map #	Case ID	Sub-category	District	County-Route-PM	Location Name	CEHC	CDFW Priority	Ownership	Species
72	20241142	Wildlife	11	San Diego – 79 – PM 5.48	Japacha Creek	Yes	No	CA Dept. of Parks and Recreation	Arroyo toad (E), Mountain lion (C), Southwestern pond turtle (P), CA legless lizard (SC), western banded gecko (SC), coast horned lizard (SC), orange-throated whiptail (SC), patch nosed snake (SC), two stiped garter snake (SC), red diamond rattlesnake (SC), Baja CA rat snake (SC), CA newt (SC), Bobcat, Coyote, Deer, Gray fox
73	20241143	Wildlife	11	San Diego – 94 – PM 23.95	Hollenbeck Canyon	No	W045	CA Fish and Wildlife	Mountain lion (C), Bobcat, Coyote, Deer, Gray fox,
74	20221242	Wildlife	12	Orange – 74 – PM 7.53	Ortega 1	No	W137	County of Orange / Private	Arroyo toad (E), Mountain lion (C), Bobcat, Coyote, Deer
75	20221243	Wildlife	12	Orange – 74 – PM 9.21	Ortega 2	Yes	W137	County of Orange	Arroyo toad (E), Mountain lion (C), Bobcat, Coyote, Deer
76	20221244	Wildlife	12	Orange – 74 – PM 11.32	Ortega 3	Yes	W137	County of Orange	Arroyo toad (E), Mountain lion (C), Bobcat, Coyote, Deer

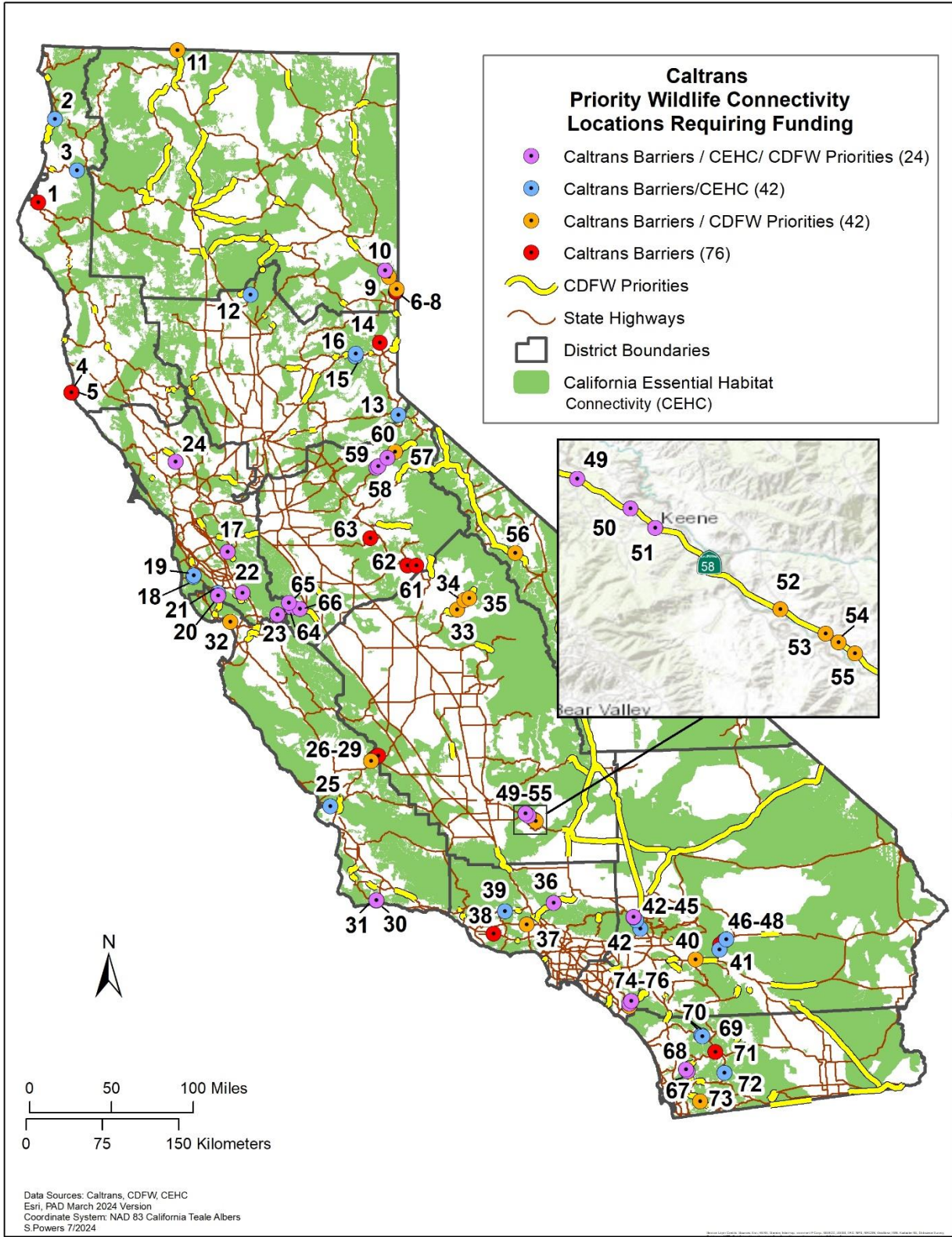


Figure 5. 2024 Priority Wildlife Connectivity Locations Requiring Funding