

SUMMARY

LAKE TAHOE AND TRUCKEE SUB-BASINS REGIONAL ADVANCE MITIGATION NEEDS ASSESSMENT -- CALTRANS DISTRICT 3

Foundational Statewide Advance Mitigation Needs Assessment (SAMNA)

Statewide Advance Mitigation Needs Assessment
Report, Third Quarter, 2023/24 Fiscal Year

Planning Period

Fiscal Years 2023/24–2032/33

Why Focus?

To improve the probability that advance mitigation projects undertaken by Caltrans will yield credits (or similar) that will be usable within the planning period, comply with an appropriate established regulatory framework, and revolve the Program's Account.

Geographic Area of Interest (GAI)

The GAI was selected after reviewing

- SAMNA forecast of impacts from 13 SHOPP transportation projects
- Qualitative assessment of STIP-eligible transportation project impacts

and determining there is a potential for SHOPP and STIP-eligible transportation projects to benefit from advance mitigation planning.

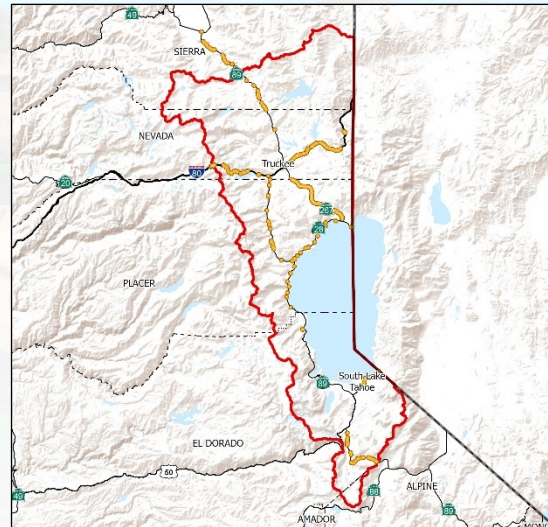
The GAI overlaps

- 2 HUC-8 sub-basins and
- portions of 1 ecoregion section

Resource Focus

The RAMNA focuses its analysis upon the following:

- Sierra Nevada yellow-legged frog
 - Wetlands, non-wetland waters, riparian habitat
- Caltrans intends for advance mitigation project scopes to benefit other environmental resources, when possible.



Feasibility Analysis

Chapter 9 provides a feasibility analysis for each advance mitigation project type authorized by SHC § 800.

Next Steps

After receiving information and feedback from interested parties and natural resource regulatory agencies on the draft document, Caltrans District 3 will begin scoping advance mitigation project(s) and seek funding from the Advance Mitigation Account.

How Can I Stay Informed?

If you have questions, concerns, or would like to provide feedback, please email the project team at advancemitigation@dot.ca.gov. For more information or to sign up to receive future informational e-blasts and learn about upcoming events, visit the Program website at advancemitigation.dot.ca.gov.

Stay Informed:

California Department of Transportation
Division of Environmental Analysis
1120 N Street, MS 27
Sacramento, CA 95814



ADVANCEMITIGATION@DOT.CA.GOV



ADVANCEMITIGATION.DOT.CA.GOV