

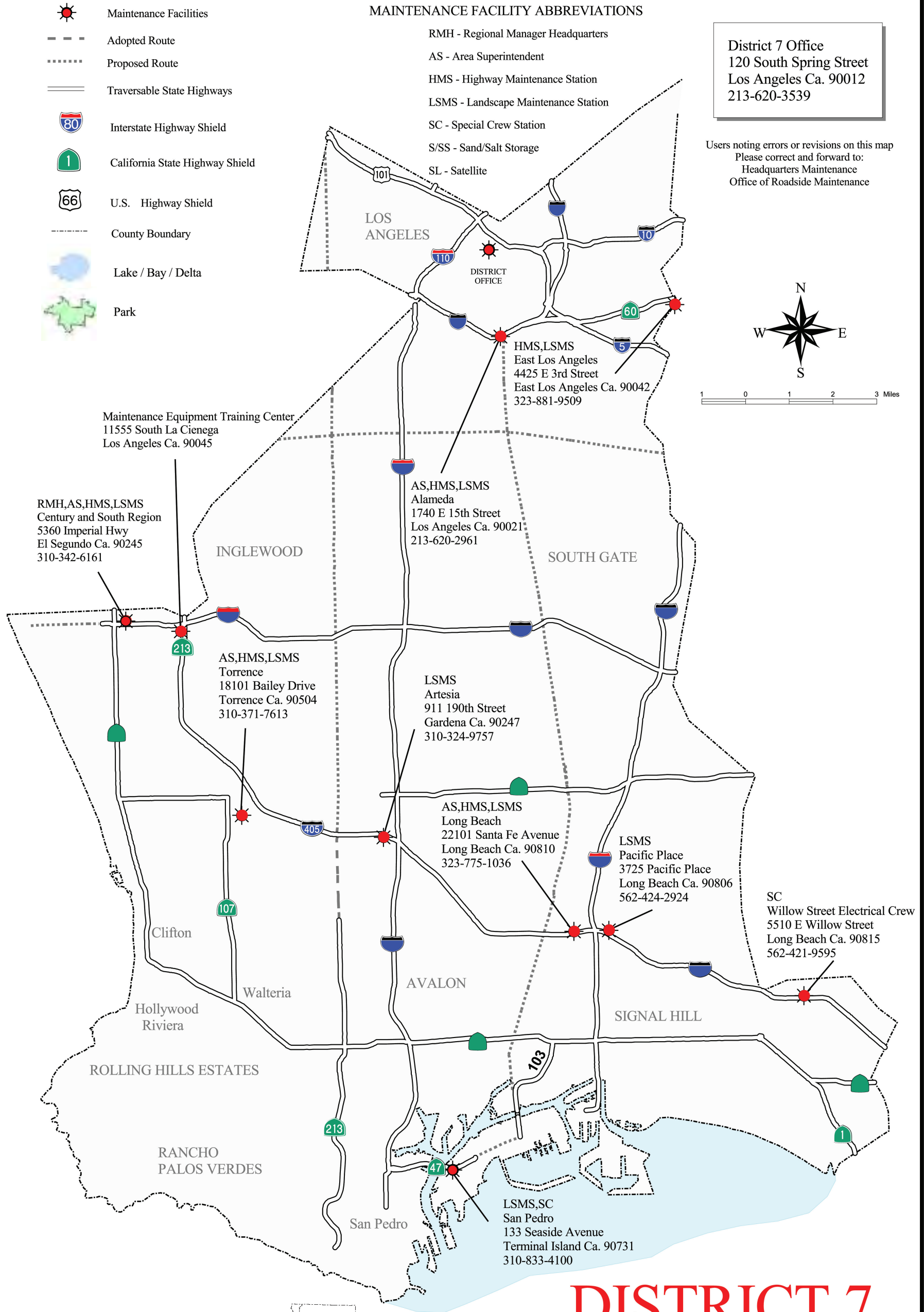
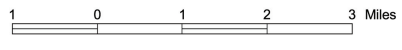
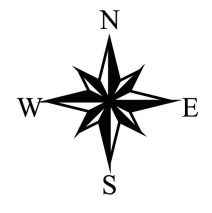
-  Maintenance Facilities
-  Adopted Route
-  Proposed Route
-  Traversable State Highways
-  Interstate Highway Shield
-  California State Highway Shield
-  U.S. Highway Shield
-  County Boundary
-  Lake / Bay / Delta
-  Park

MAINTENANCE FACILITY ABBREVIATIONS

- RMH - Regional Manager Headquarters
- AS - Area Superintendent
- HMS - Highway Maintenance Station
- LSMS - Landscape Maintenance Station
- SC - Special Crew Station
- S/SS - Sand/Salt Storage
- SL - Satellite

District 7 Office
 120 South Spring Street
 Los Angeles Ca. 90012
 213-620-3539

Users noting errors or revisions on this map
 Please correct and forward to:
 Headquarters Maintenance
 Office of Roadside Maintenance



State of California
 Department of Transportation
 Division of Maintenance GIS



DISTRICT 7

South Region Maintenance Facilities 2002