

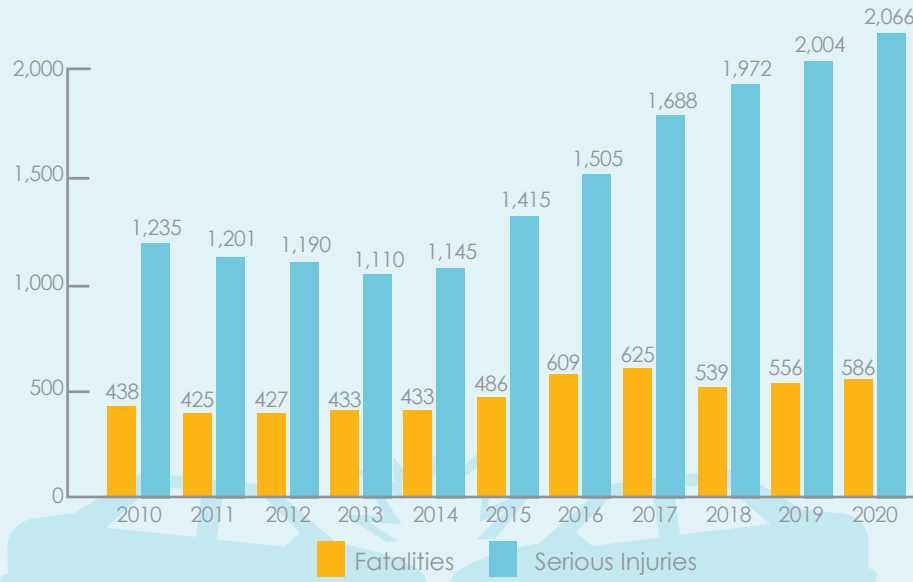
# Fresno Region



## Fresno Region Fatalities and Serious Injuries by Year

Since 2010, Fresno Region roadway fatalities and serious injuries increased by

# 59%



**Data Source:** Fatality Analysis Reporting System (FARS) 2010-2020 for Fatalities and Statewide Integrated Traffic Records System (SWITRS) 2010-2020 for Serious Injuries



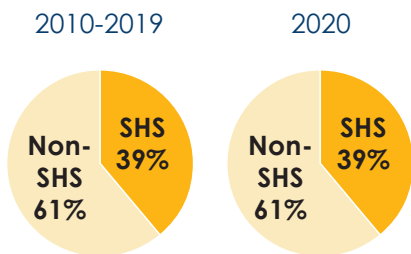
### COUNTIES:

- Alpine
- Calaveras
- Fresno
- Inyo
- Kings
- Madera
- Mariposa
- Merced
- Mono
- San Joaquin
- Stanislaus
- Tulare
- Tuolumne

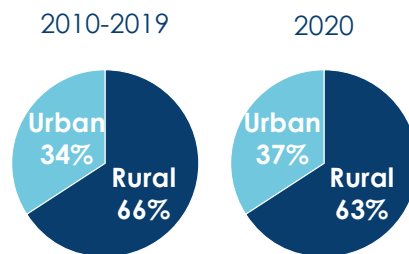
### WHERE?

About two-thirds of fatalities and serious injuries occurred on non-state highways from 2010-2019 and in 2020. Similarly, from 2010-2019 and in 2020, about two-thirds of fatalities and serious injuries occurred in a rural setting.

### Fresno Region Highway System Fatalities and Serious Injuries



### Fresno Region Urban vs. Rural Fatalities and Serious Injuries

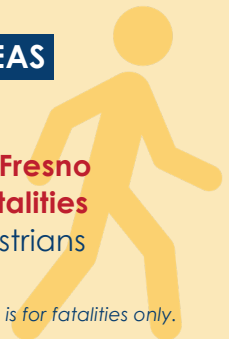


In the 2017 National Household Travel Survey,

**12.6%** of California's mode share per trip are **pedestrians**

### WHEREAS

**17%** of Fresno Region fatalities are pedestrians

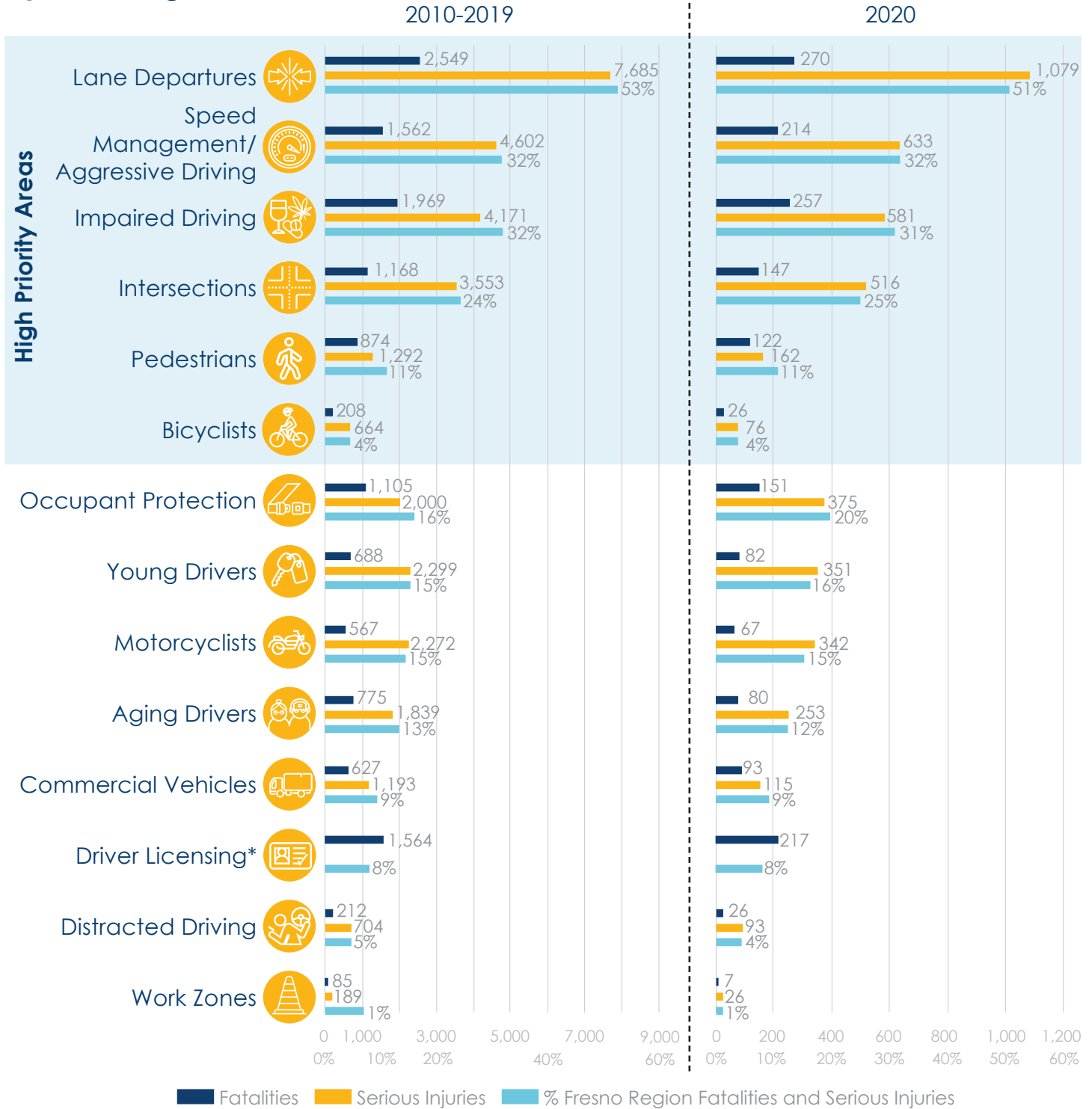


*Pedestrian comparison is for fatalities only.*

# Fresno Region



## Fatalities and Serious Injuries by Challenge Area



\*Driver Licensing information based on FARS, which does not include serious injury data.

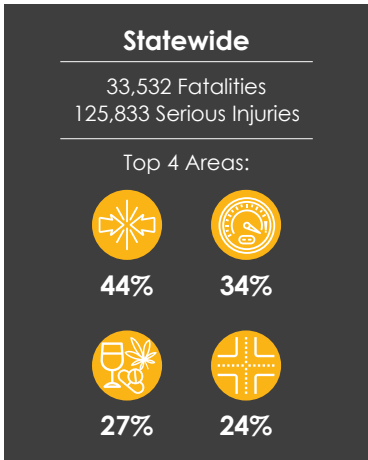
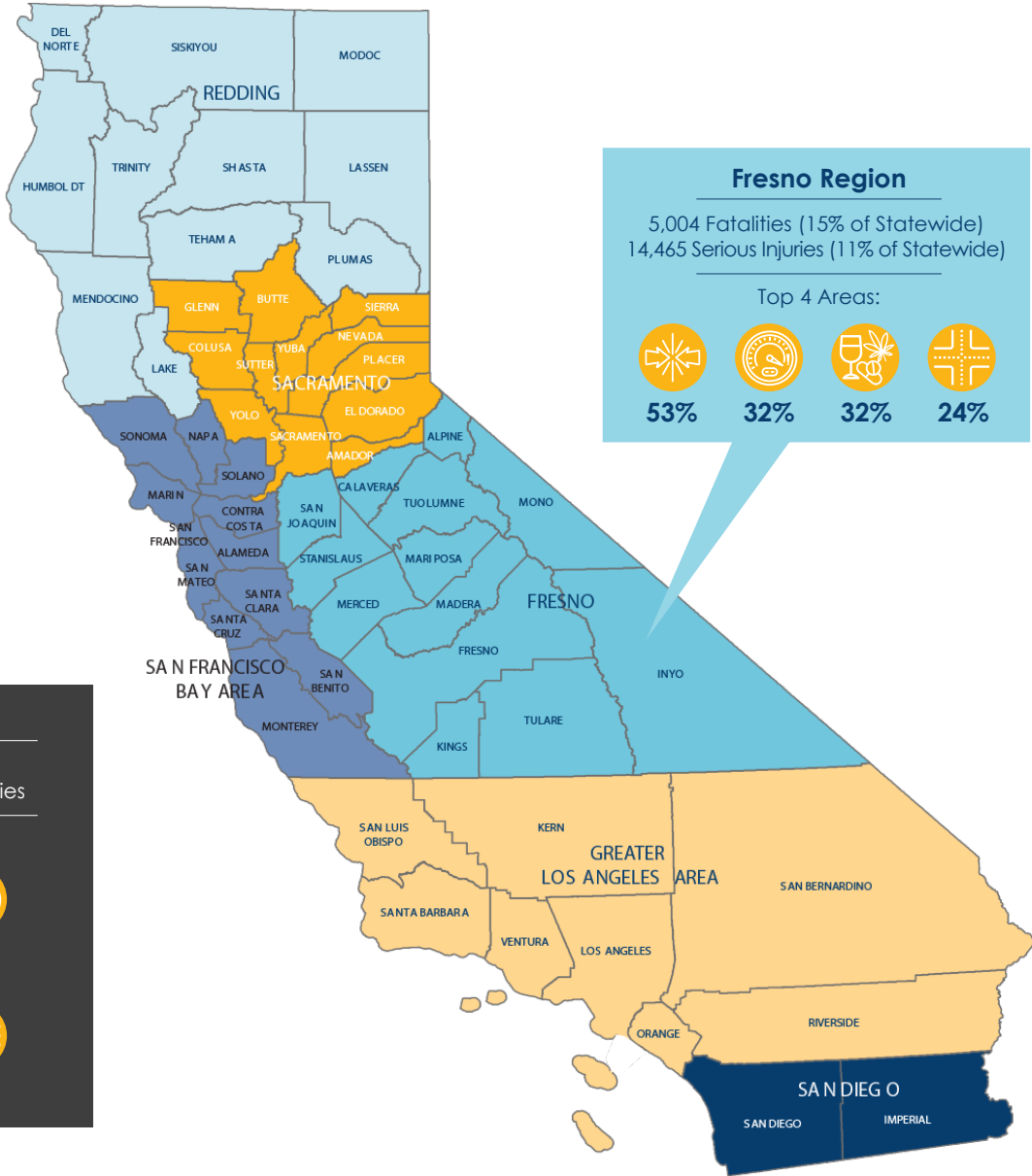
Some fatalities and serious injuries may involve more than one factor and are counted in multiple groups; the sum of all groups is greater than 100%. Emergency Response and Emerging Technologies Challenge Areas do not have reported crash data and are not represented in this chart.

All crash data is Statewide Integrated Traffic Records System (SWITRS) unless otherwise noted.

# Fresno Region



## Fatalities and Serious Injuries 2010-2019



**LEGEND**

Impaired Driving	Intersections	Lane Departures	Speed Management/Aggressive Driving

All crash data is Statewide Integrated Traffic Records System (SWITRS) unless otherwise noted.